

11

This booklet contains 48

Do not open this booklet until you are asked to do

Important Instructions :

1. The Answer Sheet is inside this Test Booklet. When you are directed to open the Test Booklet, take out the Answer Sheet and fill in the particulars on ORIGINAL copy carefully with blue/black ball point pen only.
2. The test is of 3 Hours 20 minutes duration and the Test Booklet contains 200 multiple-choice questions (four options with a single correct answer) from Physics, Chemistry and Biology (Botany and Zoology). 50 questions in each subject are divided into two sections (A and B) as per details given below:
 - a. Section A shall consist of 35 (Thirty-five) questions in each subject (Question Nos – 1 to 35, 51 to 85, 101 to 135 and 151 to 185). All questions are compulsory.
 - b. Section B shall consists of 15 (Fifteen) questions in each subject (Question Nos – 36 to 50, 86 to 100, 136 to 150 and 186 to 200). In Section B, a candidate needs to attempt any 10 (Ten) questions out of 15 (Fifteen) in each subject.

Candidates are advised to read all 15 questions in each subject of Section B before they start attempting the question paper. In the event of a candidate attempting more than ten questions, the first ten questions answered by the candidate shall be evaluated.
3. Each question carries 4 marks For each correct response, the candidate will get 4 marks. For each incorrect response, one mark will be deducted from the total scores. The maximum marks are 720.
4. Use Blue/Black Ball Point Pen only for writing particulars on this page/markings responses on Answer Sheet.
5. Rough work is to be done in the space provided for this purpose in the Booklet only.
6. On completion of the test, the candidate must hand over the Answer Sheet (ORIGINAL and OFFICE Copy) to the Invigilator before leaving the Room/Hall. The candidates are allowed to take away this Test Booklet with them.
6. On completion of the test, the candidate must hand over the Answer Sheet (ORIGINAL and OFFICE Copy) to the Invigilator before leaving the Room/Hall. The candidates are allowed to take away this Test Booklet with them.
7. The CODE for this Booklet is A11. Make sure that the CODE printed on the Original Copy of the Answer Sheet is the same as that on this Test Booklet. In case of discrepancy, the candidate should immediately report the matter to the Invigilator for replacement of both the Test Booklet and the Answer Sheet.
8. The candidates should ensure that the Answer Sheet is not folded. Do not make any stray marks on the Answer Sheet. Do not write your Roll No. anywhere else except in the specified space in the Test Booklet/Answer Sheet.
9. Use of white fluid for correction is NOT permissible on the Answer Sheet.
10. Each candidate must show on-demand his/her Admit Card to the Invigilator.
11. No candidate, without special permission of the centre Superintendent or Invigilator, would leave his/her seat.
12. The candidates should not leave the Examination Hall without handing over their Answer Sheet to the Invigilator on duty and sign (with time) the Attendance Sheet twice. Cases, where a candidate has not signed the Attendance Sheet second time, will be deemed not to have handed over the Answer Sheet and dealt with as an Unfair Means case.
13. Use of Electronic/Manual Calculator is prohibited.
14. The candidates are governed by all Rules and Regulations of the examination with regard to their conduct in the Examination Room/Hall. All cases of unfair means will be dealt with as per the Rules and Regulations of this examination.
15. No part of the Test Booklet and Answer Sheet shall be detached under any circumstances.
16. The candidates will write the Correct Test Booklet Code as given in the Test Booklet/Answer Sheet in the Attendance Sheet.
17. Compensatory time of one hour five minutes will be provided for the examination of three hours and 20 minutes duration, whether such candidate (having a physical limitation to write) uses the facility of scribe or not.

Name of the Candidate (in Capitals) : _____

Roll Number : in figure : _____ in words : _____

Centre of Examination (in Capitals) : _____

Candidate's Signature : _____ Invigilator's Signature: _____

Facsimile signature stamp of Centre Superintendent : _____

Physics

1. The speed of light in vacuum is taken as unity. If light takes 6 min 40 s to reach the Earth from the Sun, the distance between the Sun and the Earth in new unit is:

- (1) 3×10^8
- (2) 500
- (3) 3×10^{100}
- (4) 400

2. Match List I with List II.

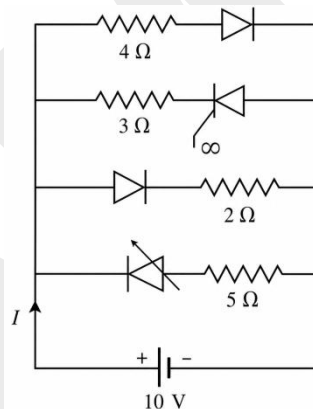
	List I		List II
A.	Young's Modulus	i.	$\frac{\Delta d}{\Delta L} \left(\frac{L}{d} \right)$
B.	Compressibility	ii.	$\frac{FL}{A(\Delta L)}$
C.	Bulk Modulus	iii.	$-\frac{1}{\Delta P} \left(\frac{\Delta V}{V} \right)$
D.	Poission's Ratio	iv.	$-P \left(\frac{V}{\Delta V} \right)$

Choose the correct answer from the options given below :

- (1) A – iv, B – i, C – ii, D – iii
- (2) A – iii, B – ii, C – i, D – iv
- (3) A – i, B – iv, C – iii, D – ii
- (4) A – ii, B – iii, C – iv, D – i

3. The current I in the circuit show below is :

(All diodes are ideal and identical)



- (1) $\frac{5}{3} A$
- (2) $\frac{5}{9} A$
- (3) $\frac{1}{3} A$
- (4) $\frac{15}{2} A$

4. The angular speed of a flywheel is increased from 600 rpm to 1200 rpm in 10 s. The number of revolutions completed by the flywheel during this time is:

- (1) 900
- (2) 600
- (3) 150
- (4) 300

ADMISSION ANNOUNCEMENT – 2026–27

Class X to XI moving students

VISION

Date : 4 May 2026

Class XI to XII moving students

AMBITION

Date : 7 May 2026

XII class Passed Students

TARGET

Date : 7 May 2026

Fulfilling the dreams of NEET and JEE since 2013

“यहाँ हर सपना बनता है, सफलता की पहचान!”

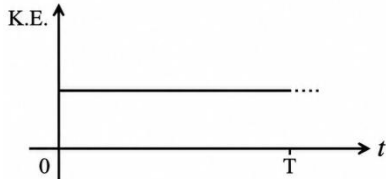
Quality Education

Reliable System

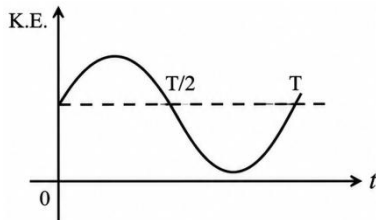
Promising Results

Top Educators

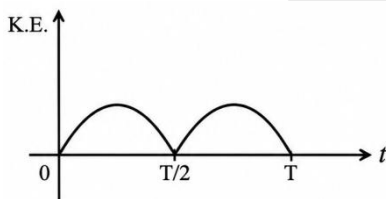
5. For a simple pendulum, having time period T , the variation of kinetic energy (K.E.) with time (t) is represented by :



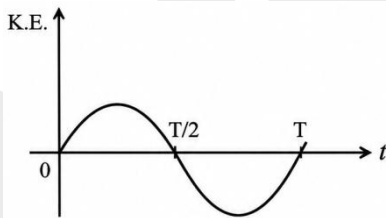
(1)



(2)



(3)



(4)

6. A resistor is connected to a battery of 12 V emf and internal resistance 2Ω . If the current in the circuit is 0.6 A, the terminal voltage of the battery is :

- (1) 10 V (2) 1.2 VV
(3) 12 V (4) 10.8

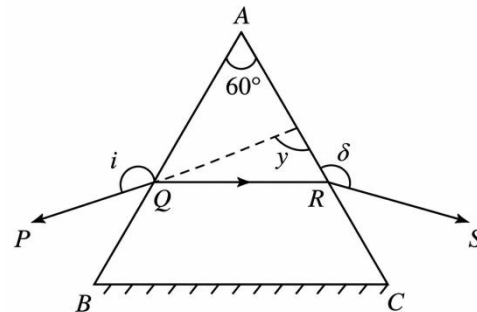
7. A flask contains argon and chlorine in the ratio of 2 : 1 by mass. The temperature of the mixture is 27°C . The ratio of root mean square speed of the molecules

of the two gases $\left(\frac{v_{\text{rms}}^{\text{Ar}}}{v_{\text{rms}}^{\text{Cl}}}\right)$ is :

(Atomic mass of argon = 40.0 u and molecular mass of chlorine = 70.0 u)

- (1) $\frac{\sqrt{7}}{2}$ (2) $\frac{7}{4}$
(3) $\frac{7}{2}$ (4) $\frac{2}{\sqrt{7}}$

8. A ray of monochromatic light is passing through an equilateral prism (ABC) as shown in the figure. The refracted ray (QR) is parallel to its base (BC) and the angle of incidence (i) is 50° . Then the angle of deviation (δ) is :



- (1) 45° (2) 35°
(3) 40° (4) 55°

TOP ACHIEVERS NEET UG



ACHIEVERS OF NEET



12 Years of Legacy

10000+ Students mentored

1700+ MBBS / IIT / NIT Selections

150+ MBBS / IIT / NIT Selections in 2025

NEET UG – 2026

9. Match List I with List II.

	List I		List II
A.	$E = hv$	i.	de-Broglie wavelength
B.	Diffraction and interference	ii.	Particle nature of light
C.	$\lambda = h/p$	iii.	Wave nature of light
D.	Compton effect	iv.	Energy of photon

Choose the correct answer from the options given below :

- (1) A – iv, B – i, C – ii, D – iii
- (2) A – iv, B – iii, C – ii, D – i
- (3) A – i, B – iv, C – iii, D – ii
- (4) A – iv, B – iii, C – i, D – ii

10. In the first excited state of hydrogen atom, the energy of its electron is -3.4 eV. The radial distance of the electron from the hydrogen nucleus in this case is approximately :

(Take $1 \text{ eV} = 1.6 \times 10^{-19} \text{ J}$, $e = 1.6 \times 10^{19} \text{ C}$ and

$$\frac{1}{4\pi\epsilon_0} = 9 \times 10^9 \text{ N m}^2/\text{C}^2)$$

- (1) $2.1 \times 10^{-9} \text{ m}$
- (2) $2.1 \times 10^{-8} \text{ m}$
- (3) $2.1 \times 10^{-10} \text{ m}$
- (4) $2.1 \times 10^{-11} \text{ m}$

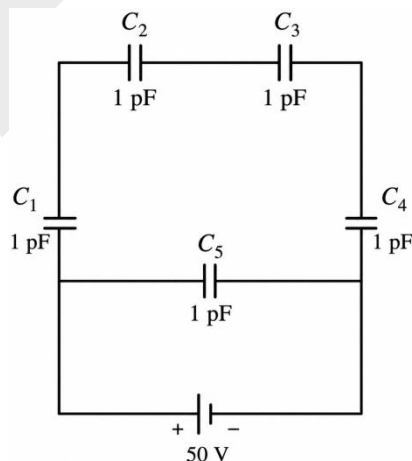
11. A box of mass 15 kg is kept on the floor of a stationary trolley. The coefficient of static friction between the box and the trolley is 0.12 . Keeping the box in stationary state over the trolley, the maximum acceleration with which the trolley can be moved horizontally in ms^{-2} is:

($g = 10 \text{ m/s}^2$)

- (1) 2.1
- (2) 1.8
- (3) 1.5
- (4) 1.2

12. Five capacitors of capacitances

$C_1 = C_2 = C_3 = C_4 = 10 \mu\text{F}$ and $C_5 = 2.5 \mu\text{F}$ are connected as shown, along with a battery of 50 V .



The equivalent capacitance and the charges on each capacitor respectively are :

- (1) $5 \mu\text{F}$, $125 \mu\text{C}$ on C_1 to C_4 and $25 \mu\text{C}$ on C_5
- (2) $5 \mu\text{F}$, $125 \mu\text{C}$ on all capacitors
- (3) $5 \mu\text{F}$, $250 \mu\text{C}$ on all capacitors
- (4) $4 \mu\text{F}$, $250 \mu\text{C}$ on C_1 to C_4 and $125 \mu\text{C}$ on C_5

ADMISSION ANNOUNCEMENT – 2026–27

Class X to XI moving students

VISION

Date : 4 May 2026

Class XI to XII moving students

AMBITION

Date : 7 May 2026

XII class Passed Students

TARGET

Date : 7 May 2026

Fulfilling the dreams of NEET and JEE since 2013

“यहाँ हर सपना बनता है, सफलता की पहचान!”

Quality Education

Reliable System

Promising Results

Top Educators

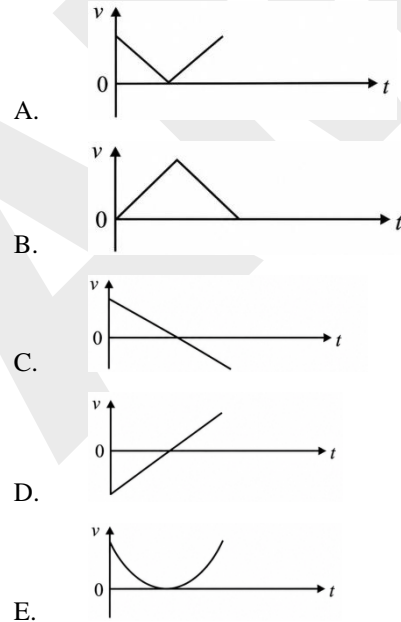
13. The amount of work done to raise a mass 'm' from the surface to the Earth to a height equal to the radius of the Earth 'R', will be :

- (1) $2 mg R$
- (2) $mg \frac{R}{4}$
- (3) $mg R$
- (4) $mg \frac{R}{2}$

14. Each side of a metallic cube of mass 5.580 kg is measured to be 9.0 cm. Keeping the significant figures in view, the density of the material of the cube can be best expressed as $X \times 10^3 \text{ kg m}^{-3}$, where the value of X is ;

- (1) 7.654
- (2) 7.6
- (3) 7.65
- (4) 7.7

15. The following plots show variation of velocity (v) with time (t), of a ball thrown vertically upward, and falling back. Which of the following plots is/are correct?



- (1) C only
- (2) D only
- (3) B only
- (4) A and E only

16. The sum of kinetic energy and potential energy of a simple pendulum bob is 0.02 joule. The speed of the simple pendulum bob at equilibrium position is approximately :

(Consider mass of the bob = 20 g)

- (1) 0.2 m/s
- (2) 1.41 m/s
- (3) 14.1 m/s
- (4) 2.0 m/s

TOP ACHIEVERS NEET UG



ACHIEVERS OF NEET



12 Years of Legacy

10000+ Students mentored

1700+ MBBS / IIT / NIT Selections

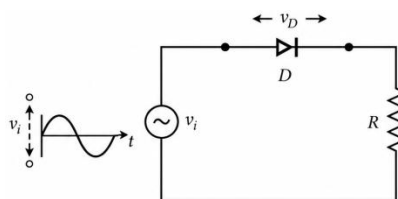
150+ MBBS / IIT / NIT Selections in 2025

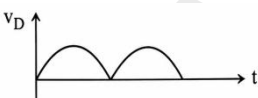

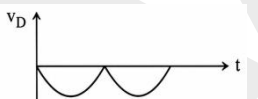
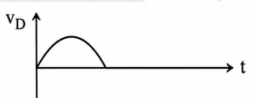
NEET UG – 2026

17. In Young's double slit experiment, using monochromatic light of wavelength λ , the intensity of light at a point on the screen where the path difference is λ , is K units. The intensity of light at a point where the path difference is $\frac{\lambda}{3}$ will be :

- (1) $\frac{K}{4}$ (2) K
 (3) $2K$ (4) $\frac{K}{2}$

18. In the circuit shown below, the voltage appearing across the diode D will be of the from :



- (1) 
- (2) 
- (3) 
- (4) 

19. An ac circuit contains a resistance of $1\text{ k}\Omega$, a capacitor of $0.1\text{ }\mu\text{F}$ and an inductor of 1 mH connected in series. The resonance frequency of the circuit is approximately :

- (1) 13.5 kHz (2) 10.1 kHz
 (3) 20.7 kHz (4) 15.9 kHz

20. In interference and diffraction, the light energy is redistributed. If it reduces in one region, producing a dark fringe, it increases in another region, producing a bright fringe.

- A. As there is no gain or loss of energy, these phenomena are consistent with the principle of conservation of energy.
 B. Diffraction and interference are characteristics exhibited only by light waves.

Choose the correct answer from the options given below :

- (1) A is true and B is also true.
 (2) A is false, but B is true.
 (3) A is true but B is false.
 (4) Both A and B are false.

21. For a travelling harmonic wave

$y(x, t) = 2.0 \cos 2\pi(10t - 0.0080x + 0.35)$, where x and y are in cm and t in s. The phase difference between oscillatory motion of two points separated by a distance of 0.5 m is :

- (1) $0.08\pi\text{ rad}$ (2) $0.8\pi\text{ rad}$
 (3) $8\pi\text{ rad}$ (4) $0.008\pi\text{ rad}$

ADMISSION ANNOUNCEMENT – 2026–27

Class X to XI moving students

VISION

Date : 4 May 2026

Class XI to XII moving students

AMBITION

Date : 7 May 2026

XII class Passed Students

TARGET

Date : 7 May 2026

Fulfilling the dreams of NEET and JEE since 2013

“यहाँ हर सपना बनता है, सफलता की पहचान!”

Quality Education

Reliable System

Promising Results

Top Educators

22. The magnitude and direction of the acceleration produced in a body of mass 5 kg when two mutually perpendicular forces 8 N and 6 N act on it, are respectively :

- (1) 20 m s^{-2} ; $\tan^{-1}(4/3)$ with 8 N force
- (2) 2 m s^{-2} ; $\tan^{-1}(3/4)$ with 6 N force
- (3) 2 m s^{-2} ; $\tan^{-1}(4/3)$ with 8 N force
- (4) 2 m s^{-2} ; $\tan^{-1}(3/4)$ with 8 N force

23. Consider two uncharged capacitors of equal capacitance 200 pF. One of them is charged by a 100 V supply and disconnected. Now this capacitor is connected to the uncharged capacitor. The amount of electrostatic energy lost in the process is :

- (1) $0.5 \times 10^{-6} \text{ J}$ (2) 1.0 J
- (3) $1.0 \times 10^{-6} \text{ J}$ (4) 0.5 J

24. The power of a crane, which lifts a mass of 1000 kg to a height of 20 m in 10 s is :

$(g = 9.8 \text{ m/s}^2)$

- (1) 19.6 W (2) 39.2 W
- (3) 19.6 kW (4) 39.2 W

25. In a vernier calipers, 20 VSD coincide with 16 MSD (each division of length 1 mm). The least count of the vernier calipers is :

- (1) 0.2 cm (2) 0.01 cm
- (3) 0.02 cm (4) 0.1 cm

26. When a ruler falls vertically, 5 different persons catch it with different reaction times.

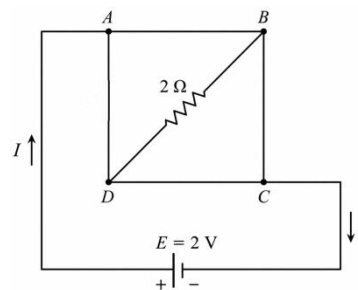
$(g = 9.8 \text{ m s}^{-2})$

- A. Person A has reaction time of 0.20 s.
- B. Person B has reaction time of 0.22 s.
- C. Person C has reaction time of 0.18 s.
- D. Person D has reaction time of 0.19 s.
- D. Person E has reaction time of 0.21 s.

What is the correct order of the distance travelled by the ruler for each person?

- (1) $B > E > A > C > D$
- (2) $C > D > A > B > E$
- (3) $B > E > A > D > C$
- (4) $C > D > A > E > B$

27. A uniform metallic wire having resistance 4Ω is bent to form a square loop (ABCD) (see figure). A resistance of 2Ω is connected between points B and D and a battery of 2 V is connected across points A and C as shown in the figure. Now the value of current (I) is :



- (1) 2 A (2) 8 A
- (3) 4.5 A (4) 4 A

TOP ACHIEVERS NEET UG



ACHIEVERS OF NEET



12 Years of Legacy

10000+ Students mentored

1700+ MBBS / IIT / NIT Selections

150+ MBBS / IIT / NIT Selections in 2025

NEET UG – 2026

28. A room heater is rated 400 W, 220 V. If the supply voltage drops to 200 V, what will be the power consumed (approximately)?
- (1) 200 W
 - (2) 400 W
 - (3) 331 W
 - (4) 121 W
29. A 100-turn closely wound circular coil of radius 5 cm has a magnetic field of 3.14×10^{-3} T at its centre. The current flowing through the coil, and the magnitude of the magnetic moment of this coil are, respectively :
- (Take $\mu_0 = 4\pi \times 10^{-7}$ T m/A)
- (1) 2 A, 10 A m²
 - (2) 2.5 A, 20 A m²
 - (3) 2 A, 4 A m²
 - (4) 2.5 A, 2 A m²
30. A rectangular wire loop of sides 8 cm and 3 cm with a small cut, is moving out of a region of uniform magnetic field of magnitude 0.3 T directed normal to the plane of the loop. The emf developed across the cut, if the velocity of the loop is 2 cm s⁻¹, in a direction normal to the shorter side of the loop, will be
- (1) 4.8×10^{-4} volt
 - (2) 1.2×10^{-4} volt
 - (3) 1.3×10^{-4} volt
 - (4) 1.8×10^{-4} volt
31. Four statements are given (A is mass number) :
- A. The volume of a nucleus is proportional to $A^{1/3}$.
 - B. The volume of nucleus is proportional to A.
 - C. The difference in mass of an atom and its nucleus is called the mass defect.
 - D. The difference in mass of a nucleus and its constituents is called the mass defect.
- Choose the correct answer from the options given below :
- (1) A and C are true, but B and D are false.
 - (2) B and C are true, but A and D are false.
 - (3) A and D are true, but B and C are false.
 - (4) B and D are true, but A and C are false.
32. An unknown nucleus has a nuclear density of 2.29×10^{17} kg/m³ and mass of 19.926×10^{-27} kg. Its mass number A is approximately :
- (Take $R_0 = 1.2 \times 10^{-15}$ m, $4\pi = 12.56$)
- (1) 12
 - (2) 20
 - (3) 16
 - (4) 19
33. Savitha, a XI standard student, while conducting an experiment to determine the effective length of a simple pendulum L, notes down the data of time taken to complete 30 oscillations as 60 s and hence calculates the length of the simple pendulum as :
- (Take $\pi^2 = 9.8$, and $g = 9.8$ m/s²)
- (1) 0.75 m
 - (2) 1.5 m
 - (3) 2 m
 - (4) 1 m

ADMISSION ANNOUNCEMENT – 2026–27

Class X to XI moving students

VISION

Date : 4 May 2026

Class XI to XII moving students

AMBITION

Date : 7 May 2026

XII class Passed Students

TARGET

Date : 7 May 2026

Fulfilling the dreams of NEET and JEE since 2013

“यहाँ हर सपना बनता है, सफलता की पहचान!”

Quality Education

Reliable System

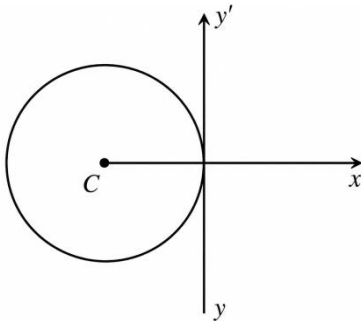
Promising Results

Top Educators

34. An electric heater supplies heat to a system at a rate of 100 W. If the system performs work at a rate of 75 J/s, then the rate at which internal energy increases will be :

- (1) 75 W (2) 100 W
 (3) 125 W (4) 25 W

35. A thin wire of length 'L' and linear mass density 'm' is bent into a circular ring (in x-y plane) with centre 'C' as shown in figure. The moment of inertia of the ring about an axis 'y'' will be :

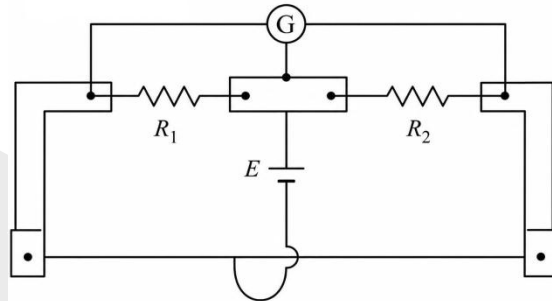


- (1) $\frac{3mL^3}{8\pi}$ (2) $\frac{3mL^3}{8\pi^2}$
 (3) $\frac{3mL^2}{8\pi}$ (4) $\frac{3mL^2}{8\pi^2}$

36. A galvanometer of resistance 100 Ω gives full scale deflection for a current of 1 mA. It is converted into an ammeter of range 0 – 10 A. The shunt required is:

- (1) 0.01 Ω (2) 0.10 Ω
 (3) 1.0 Ω (4) 0.001 Ω

37. In a metre bridge experiment (see figure), the positions of the cell, E, and galvanometer, G, are interchanged. We shall observe in the galvanometer :



- (1) Only the left-sided deflection.
 (2) There will be no deflection irrespective of the position of the jockey
 (3) Only the right-sided deflection.
 (4) Both right-sided and left-sided deflection and at balance point, no deflection.

38. The peak value of an alternating current is 5 A and frequency is 60 Hz. How long will the current, starting from zero, take to reach the peak value?

- (1) $\frac{1}{120}$ s
 (2) $\frac{1}{60}$ s
 (3) $\frac{1}{30}$ s
 (4) $\frac{1}{240}$ s

TOP ACHIEVERS NEET UG



ACHIEVERS OF NEET



12 Years of Legacy

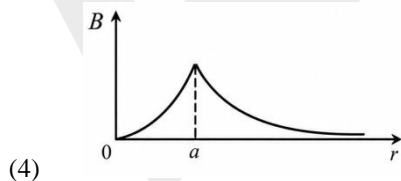
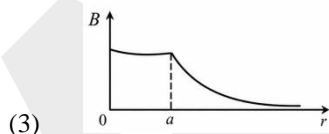
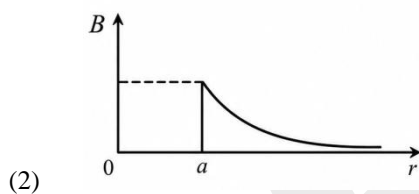
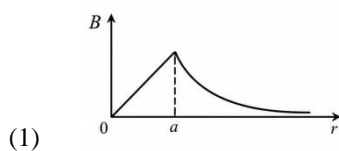
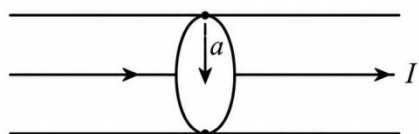
10000+ Students mentored

1700+ MBBS / IIT / NIT Selections

150+ MBBS / IIT / NIT Selections in 2025

NEET UG – 2026

39. The figure given below shows a long straight solid wire of circular cross-section of radius 'a' carrying steady current I . The current I is uniformly distributed across its cross-section. The plot which correctly represents the variation of magnetic field (B) with distance (r) from the axis of the conductor in the region is :



40. Two statements are given below :
- A. When the forward bias voltage across a p-n junction diode increases above a certain threshold voltage the diode current increases significantly.
- B. This current is called reverse saturation current.
- Choose the correct answer from the options given below :

- (1) Both Statements A and B are true.
 (2) Statement A is true, but Statement B is false.
 (3) Both Statements A and B are false.
 (4) Statement A is false, but Statement B is true.

41. Which of the following statements are correct?

- A. Inside a conductor, the electrostatic field is zero.
 B. Electric field at the surface of a charged conductor does not depend on its surface charge density.
 C. The interior of a charged conductor can have no excess charge in the static situation.
 D. At the surface of a charged conductor, the electrostatic field must be normal to the surface at every point.
 E. The electrostatic potential is zero everywhere inside a charged conductor.

Choose the correct answer from the options given below :

- (1) A, B and D only (2) A, C and E only
 (3) A, C and D only (4) C, D and E only

ADMISSION ANNOUNCEMENT – 2026–27

Class X to XI moving students

VISION

Date : 4 May 2026

Class XI to XII moving students

AMBITION

Date : 7 May 2026

XII class Passed Students

TARGET

Date : 7 May 2026

Fulfilling the dreams of NEET and JEE since 2013

“यहाँ हर सपना बनता है, सफलता की पहचान!”

Quality Education

Reliable System

Promising Results

Top Educators

42. For a metal of work function 6.6 eV, which of the following wavelengths of incident radiation does not give rise to the photoelectric effect?

(The Planck's constant as 6.6×10^{-34} Js)

- (1) 100 nm
- (2) 150 nm
- (3) 200 nm
- (4) 50 nm

43. In a concave lens, a ray of light emanating from the object parallel to the principal axis of the lens, after refraction :

- (1) passes through 2F, which is the radius of curvature of the lens.
- (2) appears to diverge from the first principal focus.
- (3) emerges parallel to the principal axis.
- (4) passes through the second principal focus.

44. A submarine is designed to withstand an absolute pressure of 100 atm. How deep can it go below the water surface?

(Consider the density of water = 1000 kg m^{-3} , 1 atm = 1×10^5 Pa and gravitational acceleration $g = 10 \text{ ms}^{-2}$)

- (1) 990 m
- (2) 9900 m
- (3) 99 m
- (4) 9000 m

45. Match List I with List II.

	List I (Electro-magnetic wave)		List II (Production)
A.	Microwave	i.	Electrons in atoms emit light when they move from a higher energy level to a lower energy level
B.	Visible light	ii.	Radioactive decay of nucleus
C.	Gamma rays	iii.	Vibration of atoms and molecules.
D.	Infra-red rays	iv.	Klystron valve or magnetron valve

Choose the correct answer from the options given below :

- (1) A – iii, B – i, C – ii, D – iv
- (2) A – iii, B – iv, C – i, D – ii
- (3) A – iv, B – i, C – ii, D – iii
- (4) A – iv, B – iii, C – ii, D – i

TOP ACHIEVERS NEET UG



ACHIEVERS OF NEET



12 Years of Legacy

10000+ Students mentored

1700+ MBBS / IIT / NIT Selections

150+ MBBS / IIT / NIT Selections in 2025

Chemistry

46. Select the reagents that reduce nitriles to primary amines:

- A. (i) LiAlH_4 ; (ii) H_2O
 B. $\text{Sn} + \text{HCl}$ C. H_2/Ni
 D. $\text{Na}(\text{Hg})/\text{C}_2\text{H}_5\text{OH}$ E. $\text{Br}_2/\text{aq. NaOH}$

Choose the correct answer from the options given below:

- (1) B, D and E only (2) A, C and D only
 (3) A, D and E only (4) A, B and C only

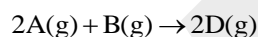
47. Match List-I with List-II:

	List-I (Transition metal compound complex)		List-II (Catalytic Role)
A.	V_2O_5	I.	Preparation of ammonia from N_2/H_2 mixture
B.	Fe	II.	Polymerisation of alkynes
C.	PdCl_2	III.	Preparation of H_2SO_4 from SO_2
D.	Ni complex	IV.	Oxidation of ethyne to ethanal

Choose the correct answer from the options given below:

- (1) A-III, B-IV, C-I, D-II
 (2) A-IV, B-I, C-III, D-II
 (3) A-II, B-I, C-IV, D-III
 (4) A-III, B-I, C-IV, D-II

48. Consider the following reaction:



$$\Delta U^\ominus = -10 \text{ kJ mol}^{-1} \text{ and } \Delta S^\ominus = -44 \text{ J K}^{-1} \text{ at } 298 \text{ K.}$$

Identify the correct option with ΔG^\ominus for the reaction and spontaneity of the reaction at 298 K.

(Given : $R = 8.31 \text{ J mol}^{-1} \text{ K}^{-1}$)

- (1) $-1.635 \text{ kJ mol}^{-1}$, spontaneous
 (2) $-0.63568 \text{ kJ mol}^{-1}$, spontaneous
 (3) $+0.63568 \text{ kJ mol}^{-1}$, non-spontaneous
 (4) $+1.635 \text{ kJ mol}^{-1}$, non-spontaneous

49. Match List I with List-II:

	List-I (Quantum Numbers)		List-II (Orbital)
	'n'	'l'	
A.	2	1	I. 3d
B.	4	0	II. 2p
C.	5	3	III. 4s
D.	3	2	IV. 5f

Choose the correct answer from the options given below:

- (1) A-IV, B-II, C-III, D-I
 (2) A-II, B-III, C-I, D-IV
 (3) A-II, B-III, C-IV, D-I
 (4) A-I, B-II, C-III, D-IV

TOP ACHIEVERS NEET UG



ACHIEVERS OF NEET



12 Years of Legacy

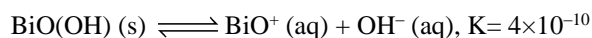
10000+ Students mentored

1700+ MBBS / IIT / NIT Selections

150+ MBBS / IIT / NIT Selections in 2025

NEET UG – 2026

50. In a qualitative analysis, Bi^{3+} is detected by appearance of precipitate of $\text{BiO}(\text{OH})$ (s). Calculate pH when the following equilibrium exists at 298 K:

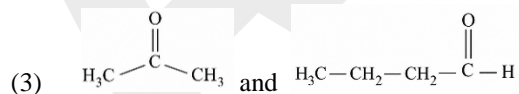


(Given : $\log 2 = 0.3010$)

- (1) 8.714 (2) 4.699
(3) 5.286 (4) 9.301
51. The correct statement with regard to the secondary structure of DNA/RNA is:
- (1) RNA possesses a single strand helix structure and contains thymine as one of the four bases.
(2) DNA possesses a double strand helix structure and contains thymine as one of the four bases.
(3) RNA possesses a double strand helix structure and contains uracil as one of the four bases.
(4) DNA possesses a single strand helix structure and contains uracil as one of the four bases.

52. The pair of molecules that are metamers among the following is

- (1) $\text{CH}_3\text{CH}_2\text{CH}_2\text{OH}$ and $\text{CH}_3 - \text{CH}(\text{OH}) - \text{CH}_3$
(2) $\text{CH}_3\text{CH}_2\text{CH}_2\text{CH}_2\text{CH}_3$ and $(\text{CH}_3)_2\text{CHCH}_2\text{CH}_3$



- (4) $\text{CH}_3\text{OCH}_2\text{CH}_2\text{CH}_3$ and $\text{CH}_3\text{CH}_2\text{OCH}_2\text{CH}_3$

53. Match List I with List-II:

	List-I (Complex)		List-II (Type of isomerism)
A.	$[\text{Pt}(\text{NH}_3)_2\text{Cl}_2]$	I.	Optical
B.	$[\text{Co}(\text{en})_3]^{3+}$	II.	Solvate
C.	$[\text{Co}(\text{NH}_3)_5\text{NO}_2]\text{Cl}_2$	III.	Geometrical
D.	$[\text{Cr}(\text{H}_2\text{O})_6]\text{Cl}_3$	IV.	Linkage

Choose the correct answer from the options given below:

- (1) A-III, B-I, C-II, D-IV
(2) A-I, B-III, C-II, D-IV
(3) A-II, B-IV, C-III, D-I
(4) A-III, B-I, C-IV, D-II

54. Match List I with List-II:

	List-I (Order of reaction)		List-II (Unit of rate constant)
A.	Zero order	I.	$\text{mol}^{-1} \text{L s}^{-1}$
B.	First order	II.	$\text{mol}^{-2} \text{L}^2 \text{s}^{-1}$
C.	Second order	III.	s^{-1}
D.	Third order	IV.	$\text{mol L}^{-1} \text{s}^{-1}$

Choose the correct answer from the options given below:

- (1) A-IV, B-II, C-I, D-III
(2) A-IV, B-III, C-I, D-II
(3) A-IV, B-III, C-II, D-I
(4) A-I, B-II, C-III, D-IV

ADMISSION ANNOUNCEMENT – 2026–27

Class X to XI moving students

VISION

Date : 4 May 2026

Class XI to XII moving students

AMBITION

Date : 7 May 2026

XII class Passed Students

TARGET

Date : 7 May 2026

Fulfilling the dreams of NEET and JEE since 2013

“यहाँ हर सपना बनता है, सफलता की पहचान!”

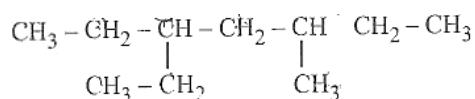
Quality Education

Reliable System

Promising Results

Top Educators

55. The correct IUPAC name of the following compound



- (1) 3-ethyl-5-methylheptane
- (2) 2,4-diethylhexane
- (3) 3-methyl-5-ethylheptane
- (4) 3,5-methyl-5-ethylheptane

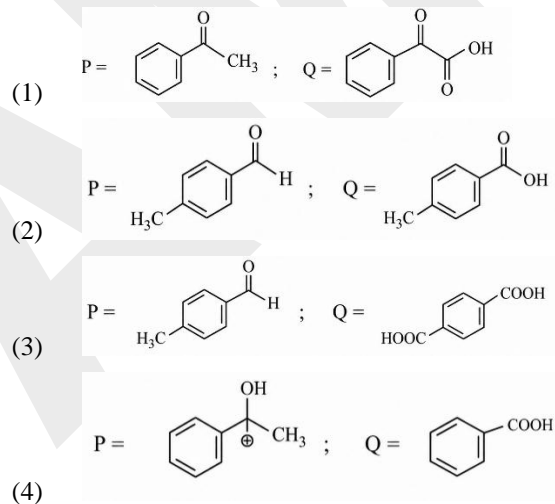
56. A bulb is rated at 150 watt, converting 8% energy into light. If energy of one photon is 4.42×10^{-19} J, how many photons are emitted by the bulb per second?

- (1) 2.71×10^{19}
- (2) 4.06×10^{19}
- (3) 27.2×10^{19}
- (4) 1.35×10^{19}

57. Methane reacts with steam at 1273 K in the presence of nickel catalyst to form:

- (1) CO and H₂O
- (2) CO₂ and H₂
- (3) CO and H₂
- (4) CO₂ and H₂O

58. Compound P (C₈H₈O) gives a red orange precipitate with 2,4-DNP reagent and it does not reduce Fehling's reagent. On drastic oxidation with chromic acid, P gives an aromatic product Q that produces effervescence. P and Q, respectively, are:



59. Match List-I with List-II:

	List-I		List-II
A.	C ₂ H ₄	I.	3 σ bonds, 2 π bonds
B.	C ₂ H ₂	II.	3 σ bonds, one lone pair
C.	CH ₄	III.	4 σ bonds
D.	NH ₃	IV.	5 σ bonds, 1 bond

Choose the correct answer from the options given below:

- (1) A-III, B-IV, C-II, D-I
- (2) A-IV, B-I, C-III, D-II
- (3) A-I, B-II, C-IV, D-III
- (4) A-II, B-III, C-I, D-IV

TOP ACHIEVERS NEET UG



ACHIEVERS OF NEET



12 Years of Legacy

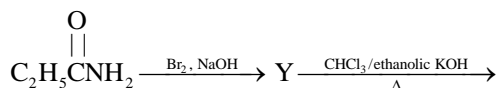
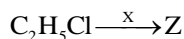
10000+ Students mentored

1700+ MBBS / IIT / NIT Selections

150+ MBBS / IIT / NIT Selections in 2025

NEET UG – 2026

60. The following two reactions give the same foul smelling product Z.



X and Z, respectively, are:

- (1) X = AgCN; Z = C₂H₅NC
 (2) X = KCN; Z = C₂H₅ CN
 (3) X = AgCN; Z = C₂H₅CN
 (4) X = KCN; Z = C₂H₅NC
61. The number of hydrogen atoms present in 5.4 g of urea is :
 (Given : Molar mass of urea : 60 g mol⁻¹,
 N_A : 6.022 × 10²³ particles mol⁻¹)
- (1) 1.084 × 10²³ (2) 1.084 × 10²²
 (3) 2.168 × 10²² (4) 2.168 × 10²³
62. Identify the incorrect statement from the following:
- (1) Nitrogen can form p π–p π multiple bonds with it self.
 (2) P (C₂H₅)₃ and As(C₆H₅)₃ form d π–d π bond with transition metals.
 (3) Phosphorus, arsenic and antimony show catenation property.
 (4) Nitrogen can form d π–d π bond with oxygen

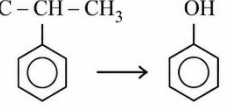
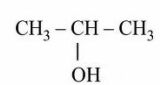
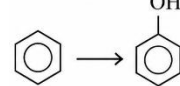
63. Which one of the following is an ambidentate ligand?

- (1) Ethane-1,2-diamine
 (2) Ethylenediaminetetraacetate ion
 (3) Thiocyanate
 (4) Oxalate

64. The correct order of increasing metallic character of Na, Be, P, Mg and Si is:

- (1) P < Si < Be < Mg < Na
 (2) P < Si < Na < Mg < Be
 (3) P < Mg < Be < Si < Na
 (4) Be < Si < P < Mg < Na

65. Match List-I with List-II:

	List-I		List-II
A.	$\text{H}_3\text{C}-\text{CH}-\text{CH}_3$ 	I.	(i) conc. H ₂ SO ₄ , Δ; (ii) NaOH, Δ; (iii) H ⁺
B.	CH ₃ COOH → CH ₃ CH ₂ OH	II.	(i) O ₂ ; (ii) H ₂ O/H ⁺
C.	$\text{CH}_3\text{CH}_2\text{CH}_2\text{OH} \rightarrow$ $\text{CH}_3-\text{CH}-\text{CH}_3$ 	III.	(i) CH ₃ OH, H ⁺ ; (ii) H ₂ , catalyst
D.		IV.	(i) conc. H ₂ SO ₄ , Δ; (ii) H ⁺ /H ₂ O

Choose the correct answer from the options given below:

- (1) A–II, B–III, C–I, D–IV
 (2) A–II, B–III, C–IV, D–I
 (3) A–II, B–IV, C–III, D–I
 (4) A–I, B–III, C–IV, D–II

ADMISSION ANNOUNCEMENT – 2026–27

Class X to XI moving students

VISION

Date : 4 May 2026

Class XI to XII moving students

AMBITION

Date : 7 May 2026

XII class Passed Students

TARGET

Date : 7 May 2026

Fulfilling the dreams of NEET and JEE since 2013

“यहाँ हर सपना बनता है, सफलता की पहचान!”

Quality Education

Reliable System

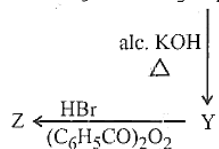
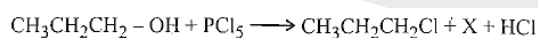
Promising Results

Top Educators

66. Although +3 oxidation state is most common in lanthanoids cerium still shows +4 oxidation state because:

- (1) After losing one more electron, it acquires $4f^{14}$ electronic configuration
- (2) Its nearest inert gas is Radon.
- (3) Its atomic number is 61.
- (4) After losing one more electron, it acquires $4f^0$ electronic configuration.

67. In the following reaction sequence, Z and Y, respectively are:



- (1) $\text{X} = \text{POCl}_3$; $\text{Z} = \text{CH}_3 - \underset{\text{Br}}{\text{CH}} - \text{CH}_3$
- (2) $\text{X} = \text{POCl}_3$; $\text{Z} = \text{CH}_3\text{CH}_2\text{CH}_2 - \text{Br}$
- (3) $\text{X} = \text{H}_3\text{PO}_3$; $\text{Z} = \text{CH}_3 - \underset{\text{Br}}{\text{CH}} - \text{CH}_3$
- (4) $\text{X} = \text{H}_3\text{PO}_3$; $\text{Z} = \text{CH}_3\text{CH}_2\text{CH}_2 - \text{Br}$

68. Match List-I with List-II:

	List-I (Complex/ion)		List-II (Shape/geometry)
A.	$[\text{Pt}(\text{Cl}_2)(\text{NH}_3)_2]$	I.	Octahedral
B.	$[\text{Co}(\text{NH}_3)_6] \text{Cl}_3$	II.	Trigonal bipyramidal
C.	$[\text{NiCl}]^{2-}$	III.	Square planar
D.	$[\text{Fe}(\text{CO})_5]$	IV.	Tetrahedral

Choose the correct answer from the options given below:

- (1) A-III, B-IV, C-I, D-I
 - (2) A-III, B-I, C-IV, D-II
 - (3) A-IV, B-I, C-III, D-II
 - (4) A-I, B-III, C-IV, D-II
69. The functional group that can be identical through phthalein dye test is:

- (1) Aldehyde
- (2) Phenolic
- (3) Carboxylic acid
- (4) Alcohol

TOP ACHIEVERS NEET UG



ACHIEVERS OF NEET



12 Years of Legacy

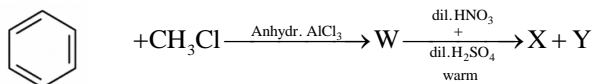
10000+ Students mentored

1700+ MBBS / IIT / NIT Selections

150+ MBBS / IIT / NIT Selections in 2025

NEET UG – 2026

70. Two products X and Y are formed in the following reaction sequence.



The suitable method that can be used for the separation of products X and Y is:

- (1) Fractional distillation
 - (2) Sublimation
 - (3) Differential extraction
 - (4) Continuous extraction
71. Identify the correct statements:
- A. The molality of 2.5 g of ethanoic acid (Molar mass : 60 g mol^{-1}) in 75 g of benzene solution is 0.556 m.
 - B. The molarity of a solution containing 5 g of NaOH (molar mass : 40 g mol^{-1}) in 450 mL of solution is 0.278 M at 298 K.
 - C. Aquatic species are more comfortable in cold water.
 - D. The solubility of gas increases with decrease in pressure.
 - E. For a binary mixture of A and B, the numbers of moles of A and B are n_A and n_B respectively.
The mole fraction of B will be $X_B = \frac{n_A}{n_A + n_B}$
- Choose the correct answer from the options given below:
- (1) A, B and C only
 - (2) A and B only
 - (3) A and C only
 - (4) A, D and E only

72. During Lassaigne's test, the elements present in an organic compound are converted from:

- (1) ionic form to ionic form
- (2) covalent form to ionic form
- (3) covalent form to covalent form
- (4) ionic form to covalent form

73. A solution of copper sulphate is electrolyzed for 10 minutes with a current of 1.5 amperes. The mass of copper deposited at cathode is:

(Given : Molar mass of Cu = 63 g mol^{-1})

1 F = 96487 C mol^{-1})

- (1) 1.7018 g
- (2) 0.2938 g
- (3) 2.4036 g
- (4) 0.5876 g

74. At a certain temperature, T (K), during a process 500 J is absorbed by the system and work of 200 J is done by the system. Then change in internal energy of the system is

- (1) 400 J
- (2) 300 J
- (3) 700 J
- (4) 500 J

ADMISSION ANNOUNCEMENT – 2026–27

Class X to XI moving students

VISION

Date : 4 May 2026

Class XI to XII moving students

AMBITION

Date : 7 May 2026

XII class Passed Students

TARGET

Date : 7 May 2026

Fulfilling the dreams of NEET and JEE since 2013

“यहाँ हर सपना बनता है, सफलता की पहचान!”

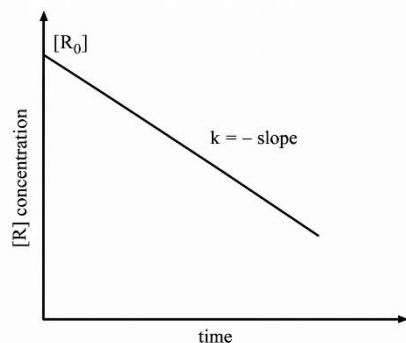
Quality Education

Reliable System

Promising Results

Top Educators

75. For a certain reaction $R \rightarrow \text{Product}$, the plot of concentration $[R]$ vs time has a negative slope as shown. The order of reaction is



- (1) 0 (2) 1
 (3) 2 (4) 2.5
76. Identify the correct statement about ClF_3 from the following options:

- (1) It has T-shaped geometry with two lone pairs on Cl atom.
 (2) It has T-shaped geometry with three lone pairs on Cl atom.
 (3) It has a trigonal pyramidal geometry with two lone pairs on Cl atom.
 (4) It has a planar trigonal geometry with two lone pairs on Cl atom.

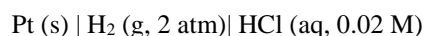
77. In a test tube containing a salt, a few drops of dilute H_2SO_4 was added, which gave colourless vapours having the smell of vinegar. The vapours turned the blue litmus paper red.

Identify the correct anion from the following:

- (1) Sulphide, S^{2-} (2) Sulphate, SO_4^{2-}
 (3) Acetate, CH_3COO^- (4) Carbonate, CO_3^{2-}
78. At 298 K, a certain buffer solution contains equal concentrations of X^- and HX , K_b for X^- is 10^{-10} What is the pH of this buffer solution?

- (1) 2 (2) 4
 (3) 9 (4) 10

79. Calculate emf of the half cell given below:



$E^\circ_{\text{H}_2/\text{H}^+} = 0\text{V}$

(Given: $\frac{2.303 RT}{F} = 0.059$, $\log 2 = 0.3010$)

- (1) -0.109 V (2) 0.035 V
 (3) -0.035 V (4) 0.109 V

80. The calculated 'spin-only' magnetic moment of Ti^{2+} ($3d^2$) is:

- (1) 5.92 BM (2) 3.87 BM
 (3) 2.84 BM (4) 4.90 BM

TOP ACHIEVERS NEET UG



ACHIEVERS OF NEET



12 Years of Legacy

10000+ Students mentored

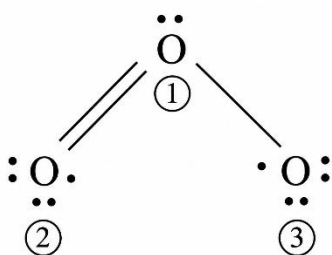
1700+ MBBS / IIT / NIT Selections

150+ MBBS / IIT / NIT Selections in 2025

NEET UG – 2026

81. Identify the incorrect statement from the following:
- (1) Carbon has the ability to form $p\pi-p\pi$ multiple bond with itself
 - (2) ECl_3 (E = B and Al) is a monomer when E = B and a dimer when E = Al.
 - (3) The order of catenation property of group 14 elements is $C \gg Si > Ge \approx Sn$
 - (4) Oxygen exhibits only -2 oxidation state.

82.



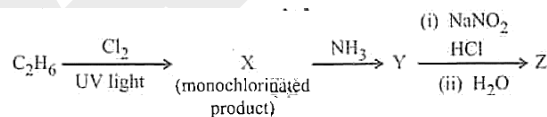
The correct formal charges on oxygen atom numbered 2, 1 and 3 respectively are:

- (1) -1, 0, +1
 - (2) 0, +1, -1
 - (3) 0, 0, 0
 - (4) +1, 0, -1
83. Phenolphthalein is used as an indicator for the titration of sodium hydroxide solution against a standard solution of oxalic acid. The colour change that is observed at an alkaline pH close to the equivalence point during this titration is:
- (1) pinkish red to yellow
 - (2) yellow to pinkish red
 - (3) pink to colourless
 - (4) colourless to pink

84. When 1 dm^3 of CO_2 gas is passed over hot coke, the volume of gaseous mixture after complete reaction at STP becomes 1.4 dm^3 . The composition of the gaseous mixture at STP is :

- (1) 0.8 dm^3 of CO, 0.8 dm^3 of CO_2
- (2) 0.8 dm^3 of CO, 0.6 dm^3 of CO_2
- (3) 0.6 dm^3 of CO, 0.6 dm^3 of CO_2
- (4) 0.6 dm^3 of CO, 0.4 dm^3 of CO_2

85. The major product Z formed in the following sequence of reactions is :



- (1) $\text{C}_2\text{H}_5\text{NO}_2$
 - (2) $\text{C}_2\text{H}_5-\text{N}=\text{N}-\text{OH}$
 - (3) $\text{C}_2\text{H}_5\text{OH}$
 - (4) $\text{C}_2\text{H}_5\text{NH}_2$
86. Given below is an expression for the rate constant of a first order reaction occurring at a certain temperature, T (K).

$$\ln k = 14.34 - \frac{1.25 \times 10^4}{T}$$

The energy of activation in kcal mol^{-1} for the reaction is:

(Given : k in s^{-1} , $R = 1.987 \text{ cal mol}^{-1} \text{ K}^{-1}$)

- (1) 24.84
- (2) 14.34
- (3) 18.63
- (4) 12.42

ADMISSION ANNOUNCEMENT – 2026–27

Class X to XI moving students

VISION

Date : 4 May 2026

Class XI to XII moving students

AMBITION

Date : 7 May 2026

XII class Passed Students

TARGET

Date : 7 May 2026

Fulfilling the dreams of NEET and JEE since 2013

“यहाँ हर सपना बनता है, सफलता की पहचान!”

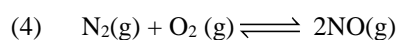
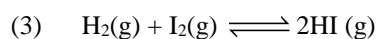
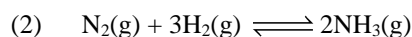
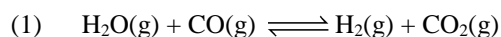
Quality Education

Reliable System

Promising Results

Top Educators

87. Given below are certain reactions. Identify the reaction for which $K_p \neq K_c$.



88. Identify the incorrect statement from the following:

(1) The largest and the smallest species among Mg, Mg^{2+} , Al and Al^{3+} are Al and Mg^{2+} , respectively.

(2) The IUPAC name of the element with atomic number 107 is Unnilseptium.

(3) The similarity in behaviour of Li with Mg is referred to as 'diagonal relationship'

(4) The oxidation state and covalency of Al in $[\text{AlCl}(\text{H}_2\text{O})_5]^{2+}$ are 3 and 6 respectively

89. Mixture of chloroform and acetone forms a solution with negative deviation from Raoult's law due to:

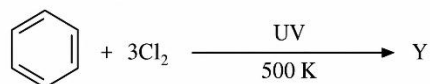
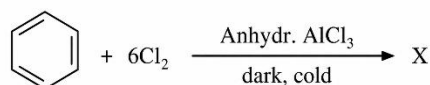
(1) increase in escaping tendency of molecules of each component.

(2) formation of hydrogen bonding between acetone and chloroform.

(3) stronger intermolecular forces between chloroform molecules than those between chloroform and acetone molecules.

(4) repulsive forces.

90. The number of chlorine atoms present in the organic products X and Y of the following reactions, respectively, are :



(1) 3 and 3

(2) 6 and 3

(3) 6 and 6

(4) 3 and 6

TOP ACHIEVERS NEET UG



ACHIEVERS OF NEET

Hariom Tomar

Ansh Kesarwani

695 MARKS

685 MARKS

12 Years of Legacy

10000+ Students mentored

1700+ MBBS / IIT / NIT Selections

150+ MBBS / IIT / NIT Selections in 2025

Biology-I

91. In angiosperms, root hairs arise from which one of the following regions of the root?
- (1) The root cap zone
 - (2) The region of meristematic activity
 - (3) The region of elongation
 - (4) The region of maturation
92. In which one of the following, the ovules are not enclosed by ovary wall and remain exposed?
- (1) Funaria
 - (2) Pinus
 - (3) Selaginella
 - (4) Wolffia
93. In the lac operon, the z gene codes for:
- (1) Permease
 - (2) Transacetylase
 - (3) Beta-galactosidase
 - (4) The repressor of lac operon
94. Exploring molecular, genetic and species-level diversity for products of economic importance is called:
- (1) Biofortification
 - (2) Bioremediation
 - (3) Bioprospecting
 - (4) Biomagnification

95. Match List I with List II:

	List I		List II
A.	Genetically modified organism	I.	Agrobacterium tumefaciens
B.	Thermostable DNA polymerase	II.	Bt cotton
C.	Ti plasmid	III.	Thermus aquaticus
D.	pBR322	IV.	Escherichia coli

Choose the correct answer from the options given below:

- (1) A-II, B-III, C-I, D-IV
- (2) A-II, B-I, C-IV, D-III
- (3) A-I, B-IV, C-III, D-II
- (4) A-I, B-II, C-IV, D-III

TOP ACHIEVERS NEET UG



ACHIEVERS OF NEET



12 Years of Legacy

10000+ Students mentored

1700+ MBBS / IIT / NIT Selections

150+ MBBS / IIT / NIT Selections in 2025

NEET UG – 2026

96. Match List I with List II

	List I		List II
A.	Productivity	I.	Gross primary productivity minus respiration losses
B.	Net primary productivity	II.	Rate of formation of new organic matter by consumers
C.	Gross primary productivity	III.	Rate of biomass production
D.	Secondary productivity	IV.	Rate of production of organic matter during photosynthesis

Choose the correct answer from the options given below:

- (1) A–III, B–I, C–IV, D–II
- (2) A–I, B–II, C–III, D–IV
- (3) A–I, B–III, C–IV, D–II
- (4) A–III, B–I, C–II, D–IV

97. Since the origin and diversification of life on Earth, there have been five episodes of mass extinction of species. How is the sixth extinction, which is in progress, different from the previous episodes?

- (1) The present net species extinction rate is zero.
- (2) The current species extinction rate is nearly 10 times faster than in previous episodes.
- (3) The present species extinction rates are 100 to 1000 times faster than the pre-human times.
- (4) The current species extinction rates are far less than previous episodes.

98. Alpha-helix is found in which level of protein structure?

- (1) Secondary structure
- (2) Tertiary structure
- (3) Primary structure
- (4) Quaternary structure

99. The main function of bulliform cells in grasses is:

- (1) to make the leaf impermeable to fungal spores
- (2) to transport water
- (3) to perform photosynthesis
- (4) to minimize water loss during water stress

100. Identify the correct sequence of steps in a cycle of Polymerase Chain Reaction:

- (1) Extension → Annealing → Denaturation
- (2) Annealing → Denaturation → Extension
- (3) Denaturation → Extension → Annealing
- (4) Denaturation → Annealing → Extension

ADMISSION ANNOUNCEMENT – 2026–27

Class X to XI moving students

VISION

Date : 4 May 2026

Class XI to XII moving students

AMBITION

Date : 7 May 2026

XII class Passed Students

TARGET

Date : 7 May 2026

Fulfilling the dreams of NEET and JEE since 2013

“यहाँ हर सपना बनता है, सफलता की पहचान!”

Quality Education

Reliable System

Promising Results

Top Educators

101. Match List I with List II

	List I (Phase of cell cycle)		List II (Activity)
A.	G ₁ phase	I.	Actual cell division occurs
B.	S phase	II.	Cell is metabolically active and continuously grows but does not replicate its DNA
C.	G ₂ phase	III.	Synthesis of DNA occurs and the amount of DNA per cell doubles
D.	M phase	IV.	Proteins are synthesized while cell growth continues

Choose the correct answer from the options given below:

- (1) A–IV, B–I, C–II, D–III
- (2) A–I, B–II, C–III, D–IV
- (3) A–III, B–IV, C–I, D–II
- (4) A–II, B–III, C–IV, D–I

102. Which of the following statements are correct?

- A. The Amazon rainforest being cut and cleared for cultivation of soyabeans is an example of habitat loss.
- B. Steller’s sea cow and passenger pigeon became extinct due to over-exploitation of humans.
- C. The Nile perch introduced into Lake Victoria in East Africa helped in population growth of cichlid fish in the lake.
- D. Water hyacinth is an invasive species.
- E. When a species becomes extinct, the plants and animal species associated with it are not affected.

Choose the correct answer from the options given below:

- (1) A, B and E only
- (2) A, B and D only
- (3) C, D and E only
- (4) B, C and D only

TOP ACHIEVERS NEET UG



ACHIEVERS OF NEET



12 Years of Legacy

10000+ Students mentored

1700+ MBBS / IIT / NIT Selections

150+ MBBS / IIT / NIT Selections in 2025

NEET UG – 2026

103. Which of the following statements are correct with respect to transcription unit?

- A. A transcription unit in DNA is defined primarily by three regions: promoter, structural gene and terminator.
- B. The promoter is said to be located towards the 5' end of the structural gene.
- C. The promoter is a DNA sequence that provides binding site for RNA polymerase.
- D. The promoter defines the template and coding strands.
- E. The terminator is located towards the 3' end of the coding strand and defines the end of the process of transcription.

Choose the correct answer from the options given below:

- (1) A, B, C and D only
- (2) A, C, D and E only
- (3) B, C, D and E only
- (4) A, B, C, D and E

104. Which one of the following statements is not true about the universal rules of binomial nomenclature?

- (1) Biological names are generally in Latin.
- (2) Both the words in a biological name, when handwritten, are separately underlined or printed in italics.
- (3) The specific epithet in a biological name starts with a small letter.
- (4) The first word in the biological name represents the specific epithet, while the second word corresponds to the genus.

ADMISSION ANNOUNCEMENT – 2026–27

Class X to XI moving students

VISION

Date : 4 May 2026

Class XI to XII moving students

AMBITION

Date : 7 May 2026

XII class Passed Students

TARGET

Date : 7 May 2026

Fulfilling the dreams of NEET and JEE since 2013

“यहाँ हर सपना बनता है, सफलता की पहचान!”

Quality Education

Reliable System

Promising Results

Top Educators

105. Match List I with List II

	List I		List II
A.	Decomposition	I.	Accumulation of dark coloured amorphous colloidal substance
B.	Detritus	II.	Refers to inorganic nutrients released by the activity of microbes in soil
C.	Mineralisation	III.	Breaking down of complex organic matter into inorganic constituents
D.	Humification	IV.	Dead remains of plants and animals including faecal matter

Choose the correct answer from the options given below:

- (1) A–IV, B–III, C–I, D–II
- (2) A–III, B–IV, C–II, D–I
- (3) A–I, B–II, C–III, D–IV
- (4) A–III, B–II, C–I, D–IV

106. Which one of the following is the site for active ribosomal RNA synthesis?

- (1) Centrosome
- (2) Chromatin
- (3) Nucleolus
- (4) Kinetochore

107. $2(C_{51}H_{98}O_6) + 145O_2 \rightarrow 102CO_2 + 98H_2O + \text{energy}$

The Respiratory Quotient (RQ) of a biomolecule for respiration, as per the above equation, would be:

- (1) Between 0.5 and 0.95
- (2) Less than 0.5
- (3) 1.0
- (4) Between 1.25 and 2

TOP ACHIEVERS NEET UG



ACHIEVERS OF NEET



12 Years of Legacy

10000+ Students mentored

1700+ MBBS / IIT / NIT Selections

150+ MBBS / IIT / NIT Selections in 2025

NEET UG – 2026

108. Match List I with List II

	List I		List II
A.	Incomplete dominance	I.	Human skin colour
B.	Co-dominance	II.	Inheritance of flower colour in <i>Antirrhinum</i> sp.
C.	Pleiotropy	III.	Phenylketonuria in humans
D.	Polygenic inheritance	IV.	ABO blood groups

Choose the correct answer from the options given below:

- (1) A–II, B–IV, C–III, D–I
- (2) A–I, B–III, C–II, D–IV
- (3) A–I, B–IV, C–III, D–II
- (4) A–II, B–I, C–III, D–IV

109. Arrange the following steps of DNA fingerprinting in correct sequence:

- A. Isolation of DNA and its digestion by restriction endonucleases
 - B. Hybridisation using a labelled VNTR probe
 - C. Transfer of separated DNA fragments to synthetic membranes
 - D. Detection of hybridised DNA fragments by autoradiography
 - E. Separation of DNA fragments by electrophoresis
- Choose the correct answer from the options given below:

- (1) A, B, D, C, E (2) A, D, B, E, C
- (3) A, E, C, B, D (4) A, E, B, C, D

110. Which of the following statements are correct with respect to packaging of DNA helix?

- A. Histones are organised to form a unit of eight molecules called histone octamer.
- B. Histones are negatively charged basic proteins.
- C. Histones are rich in the basic amino acid residues – lysine and arginine.
- D. The positively charged DNA is wrapped around the histone octamer to form nucleosomes.
- E. The packaging of chromatin at higher levels requires an additional set of proteins called non-histone chromosomal proteins.

Choose the correct answer from the options given below:

- (1) A, C and E only (2) B, D and E only
- (3) C, D and E only (4) A, B and D only

ADMISSION ANNOUNCEMENT – 2026–27

Class X to XI moving students

VISION

Date : 4 May 2026

Class XI to XII moving students

AMBITION

Date : 7 May 2026

XII class Passed Students

TARGET

Date : 7 May 2026

Fulfilling the dreams of NEET and JEE since 2013

“यहाँ हर सपना बनता है, सफलता की पहचान!”

Quality Education

Reliable System

Promising Results

Top Educators

111. Find the incorrect statement(s) about photosynthesis from the following statements:

- A. The water splitting complex is associated with PS I.
- B. C_4 plants use C_3 pathway while CO_2 plants use the main biosynthetic pathway.
- C. In C_4 plants, photorespiration does not occur.
- D. C_3 plants exhibit Kranz anatomy.
- E. ATP synthesis in chloroplast occurs through chemiosmosis.

Choose the correct answer from the options given below:

- (1) B and C only (2) B only
- (3) B and E only (4) A and D only

112. Arrange the following steps of somatic hybridisation in correct sequence:

- A. Digestion of cell walls
- B. Isolation of naked protoplasts
- C. Fusion of protoplasts to get hybrid protoplast
- D. Isolation of single cells from two different varieties of plants
- E. Growing of hybrid protoplasts to form a new plant

Choose the correct answer from the options given below:

- (1) D, A, B, C, E (2) E, B, A, D, C
- (3) D, B, A, E, C (4) E, A, B, C, D

113. Match List I with List II

	List I		List II
A.	Conjunctive tissue	I.	Specialised cells in the vicinity of guard cells
B.	Casparian strips	II.	Endodermal cells rich in starch
C.	Subsidiary cells	III.	Tissue between xylem and phloem
D.	Starch sheath	IV.	Endodermal cells with suberin deposition

Choose the correct answer from the options given below:

- (1) A-IV, B-III, C-I, D-II
- (2) A-III, B-IV, C-II, D-I
- (3) A-III, B-IV, C-I, D-II
- (4) A-IV, B-III, C-II, D-I

114. Which one of the following is not a characteristic of plant cells in the phase of elongation?

- (1) New cell wall deposition
- (2) Cell enlargement
- (3) Increased vacuolation
- (4) Large conspicuous nucleus

TOP ACHIEVERS NEET UG



ACHIEVERS OF NEET



12 Years of Legacy

10000+ Students mentored

1700+ MBBS / IIT / NIT Selections

150+ MBBS / IIT / NIT Selections in 2025

115. Match List I with List II

	List I (Growth Regulator)		List II (Function/Effect)
A.	2,4-D	I.	Brewing industry
B.	GA ₃	II.	Stimulation of stomatal closure
C.	Kinetin	III.	Herbicide
D.	ABA	IV.	Nutrient mobilisation

Choose the correct answer from the options given below:

- (1) A–III, B–I, C–IV, D–II
- (2) A–IV, B–III, C–II, D–I
- (3) A–I, B–IV, C–III, D–II
- (4) A–I, B–II, C–IV, D–III

116. The enzyme required for carboxylation in the Calvin cycle is:

- (1) Hexokinase
- (2) PEP carboxylase
- (3) RuBp carboxylase oxygenase
- (4) Carboxypeptidase

117. How many ATP and NADPH molecules are required to make one molecule of glucose through the Calvin pathway?

- (1) 18 ATP and 12 NADPH
- (2) 12 ATP and 18 NADPH
- (3) 24 ATP and 18 NADPH
- (4) 6 ATP and 12 NADPH

118. Which of the following floral formula is the correct floral formula of Solanaceae family?

- (1) $\overline{\text{K}}_{(5)} \text{C}_{(5)} \text{A}_5 \underline{\text{G}}_{(2)}$
- (2) $\overline{\text{K}}_{(5)} \overline{\text{C}}_{(5)} \text{A}_5 \underline{\text{G}}_{(2)}$
- (3) $\overline{\text{K}}_5 \text{C}_5 \text{A}_5 \underline{\text{G}}_{(2)}$
- (4) $\overline{\text{K}}_5 \overline{\text{C}}_{(5)} \text{A}_5 \underline{\text{G}}_{(2)}$

119. Which of the following is an in situ conservation method?

- (1) Sacred Groves
- (2) Wildlife Safari Parks
- (3) Botanical Gardens
- (4) Seed Banks

120. Which of the following statements are not true regarding restriction endonucleases?

- A. They are called molecular scissors.
- B. These are the enzymes responsible for restricting the growth of bacteriophages in E. coli.
- C. They cut the DNA only at the centre of the palindromic sites.
- D. They remove nucleotides only from the ends of DNA fragments.
- E. They recognise specific palindromic base-pair sequences.

Choose the answer from the options given below:

- (1) A and B only
- (2) A and E only
- (3) B and D only
- (4) C and D only

ADMISSION ANNOUNCEMENT – 2026–27

Class X to XI moving students

VISION

Date : 4 May 2026

Class XI to XII moving students

AMBITION

Date : 7 May 2026

XII class Passed Students

TARGET

Date : 7 May 2026

Fulfilling the dreams of NEET and JEE since 2013

“यहाँ हर सपना बनता है, सफलता की पहचान!”

Quality Education

Reliable System

Promising Results

Top Educators

121. In racemose inflorescence:

- (1) The main axis terminates in a flower
- (2) Flowers are solitary
- (3) The growth is limited
- (4) Flowers are borne in an acropetal succession

122. Arrange the following in the correct developmental sequence related to microsporogenesis:

- A. Microspore tetrads
- B. Sporogenous tissue
- C. Pollen grains
- D. Pollen mother cells

Choose the correct answer from the options given below:

- (1) D, A, C, B
- (2) B, D, A, C
- (3) B, D, C, A
- (4) A, D, C, B

123. Identify the correct statements about biomolecules:

- A. Lipids are generally water soluble.
- B. Proteins are polypeptides.
- C. Polysaccharides are long chains of sugars.
- D. Adenine and guanine are substituted pyrimidines.
- E. Almost all enzymes are proteins.

Choose the correct answer from the options given below:

- (1) B, D and E only
- (2) B, C and E only
- (3) A, B and C only
- (4) C, D and E only

124. Which of the following statements are true with reference to the sex-determination in honeybees?

- A. An offspring formed from the union of a sperm and an egg develops as a female (queen or worker).
- B. An unfertilized egg develops as a male by parthenogenesis.
- C. A male has half the number of chromosomes that that of a female.
- D. Males produce sperms by meiosis.
- E. Honeybees have haplodiploid sex-determination system.

Choose the correct answer from the options given below:

- (1) A, B, C and E only
- (2) B, C, D and E only
- (3) A, B, C and D only
- (4) A, B, D and E only

TOP ACHIEVERS NEET UG



ACHIEVERS OF NEET



12 Years of Legacy

10000+ Students mentored

1700+ MBBS / IIT / NIT Selections

150+ MBBS / IIT / NIT Selections in 2025

NEET UG – 2026

125. Heterophyllous development in response to environment is an example of which of the following phenomena?

- (1) Redifferentiation
- (2) Elasticity
- (3) Dedifferentiation
- (4) Plasticity

126. Which of the following statements are correct regarding amino acids?

- A. They are substituted methanes.
- B. Serine is an aromatic amino acid.
- C. Valine is a neutral amino acid.
- D. Lysine is an acidic amino acid.

Choose the correct answer from the options given below:

- (1) C and D only
- (2) B and C only
- (3) A and C only
- (4) A and B only

127. The “Evil Quartet” of biodiversity loss includes which of the following?

- (1) Over-exploitation; Alien species invasions; Air pollution; Co-extinctions
- (2) Habitat loss and fragmentation; Air pollution; Water pollution; Co-extinctions
- (3) Habitat loss and fragmentation; Over-exploitation; Alien species invasions; Co-extinctions
- (4) Over-exploitation; Alien species invasions; Soil pollution; Co-extinctions

128. Match List I with List II

	List I (Process)		List II (Location)
A.	Glycolysis	I.	Inner mitochondrial membrane
B.	ETS	II.	Mitochondrial matrix
C.	Accumulation of protons	III.	Cytoplasm
D.	Krebs cycle	IV.	Intermembrane space

Choose the correct answer from the options given below:

- (1) A–IV, B–II, C–I, D–III
- (2) A–II, B–III, C–IV, D–I
- (3) A–III, B–I, C–IV, D–II
- (4) A–I, B–IV, C–III, D–II

ADMISSION ANNOUNCEMENT – 2026–27

Class X to XI moving students

VISION

Date : 4 May 2026

Class XI to XII moving students

AMBITION

Date : 7 May 2026

XII class Passed Students

TARGET

Date : 7 May 2026

Fulfilling the dreams of NEET and JEE since 2013

“यहाँ हर सपना बनता है, सफलता की पहचान!”

Quality Education

Reliable System

Promising Results

Top Educators

129. Which one of the following is a triploid cell?
- (1) Synergid
 - (2) Central cell
 - (3) Zygote
 - (4) Primary endosperm cell
130. Which one of the following types of pollination brings genetically different types of pollen grains to the stigma?
- (1) Autogamy
 - (2) Xenogamy
 - (3) Geitonogamy
 - (4) Cleistogamy
131. Match List I with List II

	List I (Placentation)		List II (Example)
A.	Marginal	I.	Mustard
B.	Axile	II.	Pea
C.	Parietal	III.	Marigold
D.	Basal	IV.	Lemon

Choose the correct answer from the options given below:

- (1) A-II, B-IV, C-I, D-III
- (2) A-I, B-III, C-II, D-IV
- (3) A-III, B-I, C-IV, D-II
- (4) A-IV, B-III, C-I, D-II

132. The main criteria used for the Five Kingdom Classification proposed by R.H. Whittaker (1969) included:

- A. Cell structure
- B. Body organization
- C. Presence of flagellum
- D. Reproduction
- E. Phylogenetic relationships

Choose the correct answer from the options given below:

- (1) A, B, C, D and E
- (2) B, C and D only
- (3) A, B, D and E only
- (4) A, B and E only

133. Match List I with List II

	List I		List II
A.	Tryptophan	I.	Intercellular ground substance
B.	Morphine	II.	Lectin
C.	Cannabinol	III.	Enzyme
D.	Collagen	IV.	Alkaloid

Choose the correct answer from the options given below:

- (1) A-III, B-IV, C-II, D-I
- (2) A-I, B-II, C-III, D-IV
- (3) A-IV, B-III, C-II, D-I
- (4) A-III, B-II, C-IV, D-I

TOP ACHIEVERS NEET UG



ACHIEVERS OF NEET



12 Years of Legacy

10000+ Students mentored

1700+ MBBS / IIT / NIT Selections

150+ MBBS / IIT / NIT Selections in 2025

NEET UG – 2026

134. Which of the following statements are correct with respect to DNA separation, isolation and visualization?

- A. The cutting of DNA is done by molecular scissors.
- B. The DNA fragments separate according to their size in an agarose gel, upon electrophoresis.
- C. The separated DNA fragments can be seen without staining when exposed to UV light.
- D. The separated DNA fragments, when stained with ethidium bromide, can be seen in visible light.

Choose the correct answer from the options given below:

- (1) B and D only
- (2) A and B only
- (3) B and C only
- (4) A and D only

135. Which one of the following disorders is caused by the

substitution of Glutamic acid (Glu) by Valine (Val) at

the sixth position of the beta globin chain of

haemoglobin molecule?

- (1) Thalassemia
- (2) Sickle-cell anaemia
- (3) Phenylketonuria
- (4) Haemophilia

ADMISSION ANNOUNCEMENT – 2026–27

Class X to XI moving students

VISION

Date : 4 May 2026

Class XI to XII moving students

AMBITION

Date : 7 May 2026

XII class Passed Students

TARGET

Date : 7 May 2026

Fulfilling the dreams of NEET and JEE since 2013

“यहाँ हर सपना बनता है, सफलता की पहचान!”

Quality Education

Reliable System

Promising Results

Top Educators

Biology–II

136. Match List I with List II:

	Column – I		Column – II
A.	Cortisol	I.	Stimulates the formation of alveoli in mammary glands
B.	Aldosterone	II.	Produces anti-inflammatory reactions
C.	Cholecystokinin	III	Stimulates reabsorption of Na ⁺ and water from renal tubule
D.	Progesterone	IV	Stimulates secretion of pancreatic enzymes and bile juice

Choose the correct answer:

- (1) A-III, B-II, C-IV, D-I
- (2) A-IV, B-II, C-I, D-III
- (3) A-II, B-III, C-IV, D-I
- (4) A-II, B-III, C-I, D-IV

137. Arrange the following events occurring in Renin-Angiotensin mechanism in correct order:

- A. Increase in blood pressure and glomerular filtration rate
- B. Reabsorption of Na⁺ and water from distal parts of tubule due to aldosterone
- C. Fall in glomerular filtration rate
- D. Vasoconstriction by angiotensin II and release of aldosterone
- E. Renin converts angiotensinogen into angiotensin I, followed by angiotensin II

Choose the correct answer:

- (1) A, C, E, B, D
- (2) C, A, B, D, E
- (3) A, D, B, E, C
- (4) C, E, D, B, A

138. In humans, respiration occurs in the following steps.

Arrange in correct order:

- A. Diffusion of O₂ & CO₂ between blood & tissues
- B. Diffusion of O₂ and CO₂ across alveolar membrane
- C. Pulmonary ventilation by which atmospheric air is drawn in and CO₂ rich alveolar air is released out
- D. Cellular respiration
- E. Transport of gases by blood

Choose the correct answer:

- (1) A, B, C, D, E
- (2) E, A, C, D, B
- (3) C, B, E, A, D
- (4) C, A, B, E, D

TOP ACHIEVERS NEET UG



ACHIEVERS OF NEET



12 Years of Legacy

10000+ Students mentored

1700+ MBBS / IIT / NIT Selections

150+ MBBS / IIT / NIT Selections in 2025

NEET UG – 2026

139. The following are the Stages of life cycle of Plasmodium. Arrange the stages in the proper order :

- Parasites reproduce asexually in RBCs bursting the cells
- Parasites reproduce asexually in liver cells, bursting the cells and relasing into blood
- Gametocytes develop in RBCs
- Sporozoites reach liver through the blood.
- Female mosquito injects sporozoites into humans during bite

Choose the correct answer:

- E, D, B, A, C
- A, B, C, D, E
- C, A, B, D, E
- E, C, D, B, A

140. Insertion of a foreign DNA at BamHI site in an E. coli cloning vector pBR322 results in the loss of antibiotic resistance towards :

- Ampicillin and tetracycline
- Ampicillin
- Tetracycline
- Gentamycin

141. The following reaction depicts the activity of a particular class of enzymes :

X Y

| |



(Substrate) (Product) (Product)

Identify the enzyme class 'E' from the following options :

- Transferases
- Isomerases
- Lyases
- Ligases

142. The specific receptors for neurotransmitters in a synapse are present on _____.

- Schwann cell
- Pre-synaptic membrane
- Myelin sheath
- Post-synaptic membrane

143. What is the probability of having children with 'O' blood group where both mother and father are heterozygous for 'A' and 'B' blood group, respectively ?

- 25%
- 0%
- 75%
- 50%

144. Match List I with List - II

	List – I (Respiratory Volume)		List – II (Capacity in mL)
A.	ERV (Expiratory Reserve Volume)	I.	2500 - 3000 mL
B.	RV (Residual Volume)	II.	500 mL
C.	IRV (Inspiratory Reserve Volume)	III.	1000 - 1100 mL
D.	TV (Tidal Volume)	IV.	1100 - 1200 mL

Choose the correct answer from the options given below :

- A-III, B-IV, C-I, D-II
- A-III, B-I, C-IV, D-II
- A-I, B-III, C-II, D-IV
- A-I, B-II, C-III, D-IV

ADMISSION ANNOUNCEMENT – 2026–27

Class X to XI moving students

VISION

Date : 4 May 2026

Class XI to XII moving students

AMBITION

Date : 7 May 2026

XII class Passed Students

TARGET

Date : 7 May 2026

Fulfilling the dreams of NEET and JEE since 2013

“यहाँ हर सपना बनता है, सफलता की पहचान!”

Quality Education

Reliable System

Promising Results

Top Educators

145. Which of the following is not an example of convergent evolution ?

- (1) Flippers of penguins and dolphins
- (2) Eyes of octopuses and mammals
- (3) Fore limbs of whales and bats
- (4) Wings of butterflies and birds

146. Male frogs can be distinguished from female frogs due to the presence of :

- A. Bulging eyes
- B. Vocal sacs
- C. Webbed digits in feet
- D. Copulatory pad on first digit of fore limbs
- E. Olive green-coloured skin with dark irregular spots

Choose the correct answer from the options given below :

- (1) B and C only
- (2) C and E only
- (3) A and B only
- (4) B and D only

147. A group of researchers procured some fish-like animals and upon investigation the following characters were observed :

- A. Endoskeleton was made of cartilage.
- B. Ectoparasitic; as they were found attached on fish skin with their circular sucking mouth.
- C. Paired fins and scales were absent, but 7 pairs of gill slits were present.

Which of the following species of animals did they consider to fit best with these characters ?

- (1) Scoliodon sp.
- (2) Petromyzon sp.
- (3) Exocoetus sp.
- (4) Branchiostoma sp.

148. Match List I with List II with respect to chronology of evolution of life forms :

	List - I		List - II
A.	About 65 mya II	I.	Jawless fish probably evolved
B.	About 500 mya IV	II.	The dinosaurs suddenly disappeared from the earth
C.	About 350 mya I	III.	Seaweeds and few plants probably existed
D.	About 320 mya III	IV.	Invertebrates were formed and became active

Choose the correct answer from the options given below :

- (1) A-III, B-IV, C-I, D-II
- (2) A-I, B-II, C-III, D-IV
- (3) A-II, B-IV, C-III, D-I
- (4) A-II, B-IV, C-I, D-III

TOP ACHIEVERS NEET UG



ACHIEVERS OF NEET



12 Years of Legacy

10000+ Students mentored

1700+ MBBS / IIT / NIT Selections

150+ MBBS / IIT / NIT Selections in 2025

NEET UG – 2026

149. Match List I with List II :

	List – I		List – II
A.	Progestasert III	I.	Barrier made of rubber used by females
B.	Multiload 375 IV	II.	Oral contraceptive
C.	Diaphragm I	III.	Hormone releasing IUD
D.	Saheli II	IV.	Copper releasing IUD

Choose the correct answer from the options given below :

- (1) A-III, B-IV, C-I, D-II
- (2) A-IV, B-II, C-I, D-III
- (3) A-IV, B-III, C-I, D-II
- (4) A-III, B-IV, C-II, D-I

150. The WBC count of a person's blood sample is 8000/cu.mm. How many eosinophils and lymphocytes would be in the same blood sample approximately ?

- (1) 300 - 500/cu.mm and 1200 - 1500/cu.mm, respectively
- (2) 160 - 240/cu.mm and 1600 - 2000/cu.mm, respectively
- (3) 300 - 500/cu.mm and 500 - 700/cu.mm, respectively
- (4) 100 - 120/cu.mm and 160 - 200/cu.mm, respectively

151. Match List I with List II

	List – I (Drug)		List – II (Effect)
A.	Nicotine II	I.	Causes sense of euphoria and increased energy
B.	Morphine III	II.	Stimulates adrenal gland to release catecholamines into blood circulation
C.	Heroin IV	III.	Effective sedative and painkiller
D.	Cocaine I	IV.	A depressant; slows down body function

Choose the correct answer from the options given below :

- (1) A-III, B-II, C-IV, D-I
- (2) A-II, B-III, C-I, D-IV
- (3) A-II, B-III, C-IV, D-I
- (4) A-III, B-II, C-I, D-IV

152. The human protein, named α -1-antitrypsin, obtained from transgenic animals, is used for the treatment of _____.

- (1) Emphysema
- (2) Alzheimer's disease
- (3) Rheumatoid arthritis
- (4) Cystic fibrosis

ADMISSION ANNOUNCEMENT – 2026–27

Class X to XI moving students

VISION

Date : 4 May 2026

Class XI to XII moving students

AMBITION

Date : 7 May 2026

XII class Passed Students

TARGET

Date : 7 May 2026

Fulfilling the dreams of NEET and JEE since 2013

“यहाँ हर सपना बनता है, सफलता की पहचान!”

Quality Education

Reliable System

Promising Results

Top Educators

153. Select the set of fishes which belong to the class

Osteichthyes :

- (1) Devil fish, Cuttlefish and Hagfish
- (2) Saw fish, Fighting fish and Dog fish
- (3) Starfish, Hagfish and Cuttlefish
- (4) Flying fish, Angel fish and Fighting fish

154. Select the incorrect statements from the following :

- A. Digestive system in Platyhelminthes is incomplete.
- B. Bilateral symmetry is a characteristic feature of adult Echinoderms.
- C. Pseudocoelom is possessed by Aschelminthes.
- D. Notochord is persistent throughout life in the class Chondrichthyes.
- E. Members of class Reptilia maintain a constant body temperature.

Choose the answer from the options given below :

- (1) A and C only (2) B and E only
- (3) C and D only (4) B and D only

155. Non-membrane bound cell organelles found in both prokaryotic and eukaryotic cells are _____.

- (1) Ribosomes
- (2) Lysosomes
- (3) Centrosomes
- (4) Mitochondria

156. Which of the following equations depicts Verhulst-Pearl logistic population growth ?

- (1) $\frac{dN}{dt} = rN \left(\frac{K + N}{K} \right)$
- (2) $\frac{dN}{dt} = rN \left(\frac{K - N}{K} \right)$
- (3) $\frac{dN}{dt} = rN \left(\frac{K - N}{N} \right)$
- (4) $\frac{dN}{dt} = rN \left(\frac{K}{K - N} \right)$

TOP ACHIEVERS NEET UG



ACHIEVERS OF NEET



12 Years of Legacy

10000+ Students mentored

1700+ MBBS / IIT / NIT Selections

150+ MBBS / IIT / NIT Selections in 2025

NEET UG – 2026

157. Select the incorrect statements with reference to Rh grouping.

- A. Erythroblastosis foetalis is a condition observed having foetus with Rh^{-ve} blood and mother with Rh^{+ve} blood.
- B. Rh antigen is observed on RBCs in the majority of human beings.
- C. Before blood transfusion, Rh group should also be matched.
- D. Rh incompatibility is observed when a pregnant mother is Rh^{-ve} and the foetus is Rh^{+ve}
- E. Erythroblastosis foetalis can be avoided by administering anti-Rh antibodies to the mother immediately after the delivery of the second child.

Choose the answer from the options given below :

- (1) C and D only
- (2) A and B only
- (3) A and E only
- (4) B and C only

158. Match List I with List II :

	List – I (Bioactive molecules)		List – II (Importance)
A.	Streptokinase	I.	Immunosuppressive agent
B.	Statins	II.	Removal of clots from the blood vessels
C.	Lipases	II	Blood cholesterol-lowering agent
D.	Cyclosporin A	I	Detergent formulations
		V	

Choose the correct answer from the options given below :

- (1) A-II, B-III, C-I, D-IV
- (2) A-IV, B-III, C-II, D-I
- (3) A-III, B-II, C-IV, D-I
- (4) A-II, B-III, C-IV, D-I

ADMISSION ANNOUNCEMENT – 2026–27

Class X to XI moving students

VISION

Date : 4 May 2026

Class XI to XII moving students

AMBITION

Date : 7 May 2026

XII class Passed Students

TARGET

Date : 7 May 2026

Fulfilling the dreams of NEET and JEE since 2013

“यहाँ हर सपना बनता है, सफलता की पहचान!”

Quality Education

Reliable System

Promising Results

Top Educators

159. Match List I with List II :

	List – I		List – II
A.	Molluscs	I.	Pulmonary respiration only
B.	Reptiles	II.	Branchial respiration
C.	Adult amphibians	III.	Cellular respiration
D.	Amoeba	IV.	Pulmonary and Cutaneous respiration

Choose the correct answer from the options given below :

- (1) A-II, B-I, C-IV, D-III
- (2) A-I, B-II, C-IV, D-III
- (3) A-II, B-I, C-III, D-IV
- (4) A-III, B-II, C-I, D-IV

160. The sixth mutant codon of beta globin gene causing polymerization of Haemoglobin and change in RBC shape is _____.

- (1) GUG
- (2) AUG
- (3) GAG
- (4) CAG

161. Choose the correct statements regarding muscle contraction.

- A. A motor neuron carries a signal sent by the Central Nervous System (CNS) to the sarcolemma of the muscle fibre.
- B. The neural signal generates an action potential which causes the release of Ca^{++} into sarcoplasm.
- C. Increase in Ca^{++} inactivates the actin for breaking cross bridges.
- D. Actin binds to the myosin head to form a cross bridge.
- E. Shortening of sarcomere takes place, by pulling actin filaments towards the centre of 'A' band.

Choose the correct answer from the options given below :

- (1) C and D only
- (2) A and B only
- (3) C and E only
- (4) A, B, D and E only

TOP ACHIEVERS NEET UG



ACHIEVERS OF NEET



12 Years of Legacy

10000+ Students mentored

1700+ MBBS / IIT / NIT Selections

150+ MBBS / IIT / NIT Selections in 2025

NEET UG – 2026

162. Which of the following statements are correct with reference to human endoskeleton ?

- A. Human skull is monocondylic.
- B. The joint between any two adjoining vertebrae is a cartilaginous joint.
- C. In human beings, the number of cervical vertebrae is seven.
- D. All ribs except the last 2 pairs are bicephalic.
- E. The occipital bone of skull is articulated with atlas vertebra.

Choose the correct answer from the options given below :

- (1) B and E only
- (2) B, C and E only
- (3) C, D and E only
- (4) A, B and D only

163. Spermatogonia undergo a series of cell divisions to produce sperms. Select the correct statements from the following :

- A. Spermatogonia always undergo meiotic cell division.
- B. Primary spermatocytes divide mitotically to produce secondary spermatocytes.
- C. Secondary spermatocytes, through their second meiotic division, produce haploid spermatids.
- D. Spermatids produce spermatozoa through mitosis.
- E. Spermatids transform into spermatozoa by spermiogenesis.

Choose the correct answer from the options given below :

- (1) A and E only
- (2) C and E only
- (3) A, C and E only
- (4) B, C and D only

ADMISSION ANNOUNCEMENT – 2026–27

Class X to XI moving students

VISION

Date : 4 May 2026

Class XI to XII moving students

AMBITION

Date : 7 May 2026

XII class Passed Students

TARGET

Date : 7 May 2026

Fulfilling the dreams of NEET and JEE since 2013

“यहाँ हर सपना बनता है, सफलता की पहचान!”

Quality Education

Reliable System

Promising Results

Top Educators

164. The JGA (Juxta Glomerular Apparatus) is a special sensitive region formed by cellular modifications in the _____ related to the same nephron.

- (1) Distal convoluted tubule and efferent renal arteriole
- (2) Proximal convoluted tubule and efferent renal arteriole
- (3) Proximal convoluted tubule and afferent renal arteriole
- (4) Distal convoluted tubule and afferent renal arteriole

165. Which one of the following is an appropriate example of 'sexual deceit' ?

- (1) Female wasp and fig
- (2) Ophrys and bumblebee
- (3) Sea anemone and clown fish
- (4) Cuckoo and crow

166. Choose the correct statements regarding frog's anatomy :

- A. Hepatic portal system is the special venous connection between liver and intestine.
- B. There are twelve pairs of cranial nerves arising from the brain.
- C. The ureters and oviducts open separately into the cloaca in female frogs.
- D. Hind-brain consists of cerebellum, medulla oblongata and optic lobes.
- E. Sinus venosus joins the right atrium of heart.

Choose the correct answer from the options given below :

- (1) A, B and C only
- (2) B and D only
- (3) B and C only
- (4) A, C and E only

TOP ACHIEVERS NEET UG



ACHIEVERS OF NEET



12 Years of Legacy

10000+ Students mentored

1700+ MBBS / IIT / NIT Selections

150+ MBBS / IIT / NIT Selections in 2025

NEET UG – 2026

167. Match List I with List II related to embryonic development at various months of pregnancy :

	List – I		List – II
A.	The foetus movement starts and hair appears on the head	I.	24 weeks of pregnancy
B.	The foetus develops limbs and digits	II.	20 weeks of pregnancy
C.	The foetus develops external genital organs	III.	8 weeks of pregnancy
D.	The foetus body is covered with fine hair; eyelids separate and eyelashes are formed	IV.	12 weeks of pregnancy

Choose the correct answer from the options given below :

- (1) A-IV, B-II, C-III, D-I
- (2) A-II, B-III, C-IV, D-I
- (3) A-III, B-II, C-IV, D-I
- (4) A-II, B-IV, C-III, D-I

168. In a population of a grasshopper species, the chromosome number of some members is 23 and some other members possess 24 chromosomes. The 23 and 24 chromosome-bearing members in this species are _____.

- (1) females and males, respectively
- (2) all males
- (3) males and females, respectively
- (4) all females

169. In which animal do haploid cells divide mitotically to produce gametes ?

- (1) Male honeybees
- (2) Male earthworms
- (3) Male frogs
- (4) Male grasshoppers

ADMISSION ANNOUNCEMENT – 2026–27

Class X to XI moving students

VISION

Date : 4 May 2026

Class XI to XII moving students

AMBITION

Date : 7 May 2026

XII class Passed Students

TARGET

Date : 7 May 2026

Fulfilling the dreams of NEET and JEE since 2013

“यहाँ हर सपना बनता है, सफलता की पहचान!”

Quality Education

Reliable System

Promising Results

Top Educators

170. Arrange the following cell layers/structures around the female gamete, from outer to inner side :

- Zona pellucida
- Perivitelline space
- Corona radiata
- Plasma membrane of ovum

Choose the correct answer from the options given below :

- D, B, A, C
- C, A, D, B
- C, A, B, D
- A, C, B, D

171. What is the reason behind production of large holes in 'Swiss Cheese' ?

- The production of large amount of CO_2 by *Propionibacterium sharmanii*
- The production of large amount of CO_2 by *Clostridium butylicum*
- The production of large amount of CO_2 and H_2 by lactic acid bacteria called *Lactobacillus*
- The production of large amount of CO_2 and H_2

by *Trichoderma polysporum*

172. The toxin proteins isolated from *Bacillus thuringiensis*, coded by which of the following genes would control cotton bollworms and corn borer, respectively ?

- cryIAc* and *cryIAb*
- cryIAc* and *cryIIAb*
- cryIIAb* and *cryIAc*
- cryIAc* and *cryIIIAb*

173. Ecological pyramids represent the relationship between the organisms at different trophic levels and they are generally inverted for :

- Pyramid of number in grassland
- Pyramid of energy in pond ecosystem
- Pyramid of biomass in grassland
- Pyramid of biomass in sea

TOP ACHIEVERS NEET UG



ACHIEVERS OF NEET



12 Years of Legacy

10000+ Students mentored

1700+ MBBS / IIT / NIT Selections

150+ MBBS / IIT / NIT Selections in 2025

NEET UG – 2026

174. Choose the correct statement regarding GIFT to overcome infertility.

- (1) Ova collected from a female donor are transferred to the uterus of an infertile female.
- (2) Early embryos with up to 8 blastomeres are transferred to the uterus of an infertile female.
- (3) Early embryos with up to 8 blastomeres are transferred into the fallopian tube of an infertile female.
- (4) It is the transfer of an ovum collected from a donor into the fallopian tube of another female who cannot produce ovum but can provide suitable environment for fertilization and development.

175. Choose the correct statements regarding cell organelles and their inclusions.

- A. The endomembrane system includes Golgi complex, endoplasmic reticulum and mitochondria.
- B. Rough endoplasmic reticulum bears ribosomes on its surface.
- C. Both mitochondria and plastids have circular DNA.
- D. A network of microtubules, microfilaments and intermediate filaments present in the cytoplasm is called cytoskeleton.
- E. Mitochondrion is a single membrane-bound structure.

Choose the correct answer from the options given below :

- (1) A and B only
- (2) A, B and C only
- (3) C, D and E only
- (4) B, C and D only

ADMISSION ANNOUNCEMENT – 2026–27

Class X to XI moving students

VISION

Date : 4 May 2026

Class XI to XII moving students

AMBITION

Date : 7 May 2026

XII class Passed Students

TARGET

Date : 7 May 2026

Fulfilling the dreams of NEET and JEE since 2013

“यहाँ हर सपना बनता है, सफलता की पहचान!”

Quality Education

Reliable System

Promising Results

Top Educators

176. Select the correct statements regarding cell membrane in eukaryotic cell.

- A. Membrane of human RBCs has approximately 52% protein.
- B. Major phospholipids are arranged in a bilayer.
- C. Extensions of the plasma membrane into the cell form mesosomes.
- D. Tails towards the inner part of lipids are hydrophobic and thus protected from aqueous medium.
- E. Glycocalyx is present on the outer surface of the plasma membrane.

Choose the correct answer from the options given below :

- (1) C, D and E only
- (2) B, C and E only
- (3) A, B and D only
- (4) A, C and E only

177. Match List I with List II related to muscular/skeletal system :

	List – I		List – II
A.	Tetany	I.	Inflammation of joints
B.	Arthritis	II.	Autoimmune disorder affecting neuromuscular junction
C.	Myasthenia gravis	III.	Wild contraction in muscle due to low Ca^{++} in body fluid
D.	Muscular dystrophy	IV.	Progressive degeneration of skeletal muscle

Choose the correct answer from the options given below :

- (1) A-III, B-I, C-II, D-IV
- (2) A-I, B-II, C-III, D-IV
- (3) A-IV, B-III, C-II, D-I
- (4) A-III, B-II, C-I, D-IV

TOP ACHIEVERS NEET UG



ACHIEVERS OF NEET



12 Years of Legacy

10000+ Students mentored

1700+ MBBS / IIT / NIT Selections

150+ MBBS / IIT / NIT Selections in 2025

NEET UG – 2026

178. Evolution of human appears parallel to the progressive development of brain and language skills. As such, the evolution of individual species in the sequence of their appearance is :

- (1) Ramapithecus → Homo habilis → Homo erectus → Neanderthal → Homo sapiens
- (2) Homo sapiens → Ramapithecus → Homo habilis → Neanderthal → Homo erectus
- (3) Homo habilis → Homo erectus → Ramapithecus → Neanderthal → Homo sapiens
- (4) Neanderthal → Ramapithecus → Homo habilis → Homo erectus → Homo sapiens

179. The flightless bird with forelimbs modified as paddle-like structures suited for swimming is known as :

- (1) Struthio
- (2) Neophron
- (3) Aptenodytes
- (4) Psittacula

180. Choose the correct statements regarding population interactions between two species.

- A. In both parasitism and commensalism, only one species benefits and the other species is harmed.
- B. Both species benefit in mutualism.
- C. Both species benefit in commensalism.
- D. In parasitism, only one species benefits and the other species is harmed.
- E. In amensalism, one species is harmed and the other is unaffected.

Choose the correct answer from the options given below :

- (1) B and E only
- (2) A and B only
- (3) B, D and E only
- (4) A and D only

ADMISSION ANNOUNCEMENT – 2026–27

Class X to XI moving students

VISION

Date : 4 May 2026

Class XI to XII moving students

AMBITION

Date : 7 May 2026

XII class Passed Students

TARGET

Date : 7 May 2026

Fulfilling the dreams of NEET and JEE since 2013

“यहाँ हर सपना बनता है, सफलता की पहचान!”

Quality Education

Reliable System

Promising Results

Top Educators

निम्नलिखित निर्देश ध्यान से पढ़ें:	Read carefully the following instructions:
6. परीक्षा सम्पन्न होने पर, परीक्षार्थी कक्ष/हॉल छोड़ने से पूर्व उत्तर पत्र (मूल प्रतिलिपि एवं कार्यालय प्रतिलिपि) कक्ष निरीक्षक को अवश्य सौंप दें। परीक्षार्थी अपने साथ प्रश्न पुस्तिका ले जा सकते हैं।	6. On completion of the test, the candidate must hand over the Answer Sheet (ORIGINAL and OFFICE Copy) to the Invigilator before leaving the Room/Hall. The candidates are allowed to take away this Test Booklet with them.
7. इस पुस्तिका का संकेत है E1। यह सुनिश्चित कर लें कि इस पुस्तिका का संकेत, उत्तरपत्र के मूल प्रतिलिपि पर छापे गये संकेत से मिलता है। अगर यह भिन्न हो तो परीक्षार्थी दूसरी परीक्षा पुस्तिका और उत्तर पत्र लेने के लिए निरीक्षक को तुरंत अगवत कराएं।	7. The CODE for this Booklet is A2. Make sure that the CODE printed on the original Copy of the Answer Sheet is the same as that on the Test Booklet. In case of discrepancy, the candidate should immediately report the matter to the Invigilator for replacement of both Test Booklet & the Answer Sheet.
8. परीक्षार्थी/सुनिश्चित करें कि इस उत्तर पत्र को मोड़ा न जाए एवं उस पर कोई निशान न लगाएं। परीक्षार्थी अपना अनुक्रमांक प्रश्न पुस्तिका/उत्तर पत्र में निर्धारित स्थान के अतिरिक्त अन्यत्र ना लिखें।	8. The candidates should ensure that the Answer Sheet is not folded. Do not make any stray marks on the Answer Sheet. Do not write your Roll No. anywhere else except in the specified space in the Test Booklet/Answer Sheet.
9. उत्तर पत्र पर किसी प्रकार के संशोधन हेतु व्हाइट फ्लूइड के प्रयोग की अनुमति नहीं है।	9. Use of white fluid for correction is NOT permissible on the Answer Sheet.
10. पूछे जाने पर प्रत्येक परीक्षार्थी, निरीक्षक को अपना प्रवेश-पत्र दिखाएं।	10. Each candidate must show on-demand his/her Admit Card to the Invigilator.
11. केंद्र अधीक्षक या निरीक्षक की विशेष अनुमति के बिना कोई परीक्षार्थी अपना स्थान न छोड़ें।	11. No candidate, without special permission of the centre Superintendent or Invigilator, would leave his/her seat.
12. कार्यरत निरीक्षक को अपना उत्तर पत्र दिए बिना एवं उपस्थित-पत्रक पर दुबारा हस्ताक्षर (समय के साथ) किए बिना कोई परीक्षार्थी परीक्षा हॉल नहीं छोड़ेंगे। यदि किसी परीक्षार्थी ने दूसरी बार उपस्थित-पत्रक पर हस्ताक्षर नहीं किए तो यह माना जाएगा कि उसने उत्तर पत्र नहीं लौटाया है और यह अनुचित साधन का मामला माना जाएगा।	12. The candidates should not leave the Examination Hall without handing over their Answer Sheet to the Invigilator on duty and sign (with time) the Attendance Sheet twice. Case, where a candidate has not signed the Attendance Sheet second time, will be deemed not to have handed over the Answer Sheet and dealt with as an Unfair Means case.
13. इलेक्ट्रॉनिक/हस्तचालित परिकलक का उपयोग वर्जित है।	13. Use of Electronic/Manual Calculator is prohibited.
14. परीक्षा-कक्ष/हॉल में आचरण के लिए परीक्षार्थी, परीक्षा के नियमों एवं विनियमों द्वारा नियमित हैं। अनुचित साधन के सभी मामलों का फैसला इस परीक्षा के नियमों एवं विनियमों के अनुसार होगा।	14. The candidates are governed by all Rules and Regulations of the examination with regard to their conduct in the Examination Room/Hall. All cases of unfair means will be dealt with as per the Rules and Regulations of this examination.
15. किसी हालात में परीक्षा पुस्तिका और उत्तर पत्र का कोई भाग अलग न करें।	15. No part of the Test Booklet and Answer Sheet be detached under any circumstances.
16. परीक्षा पुस्तिका/ उत्तर पत्र में दिए गए परीक्षा पुस्तिका संकेत को परीक्षार्थी सही तरीके से उपस्थित-पत्रक में लिखें।	16. The candidates will write Correct Test Booklet Code as given in Test Booklet/Answer Sheet in the Attendance Sheet.